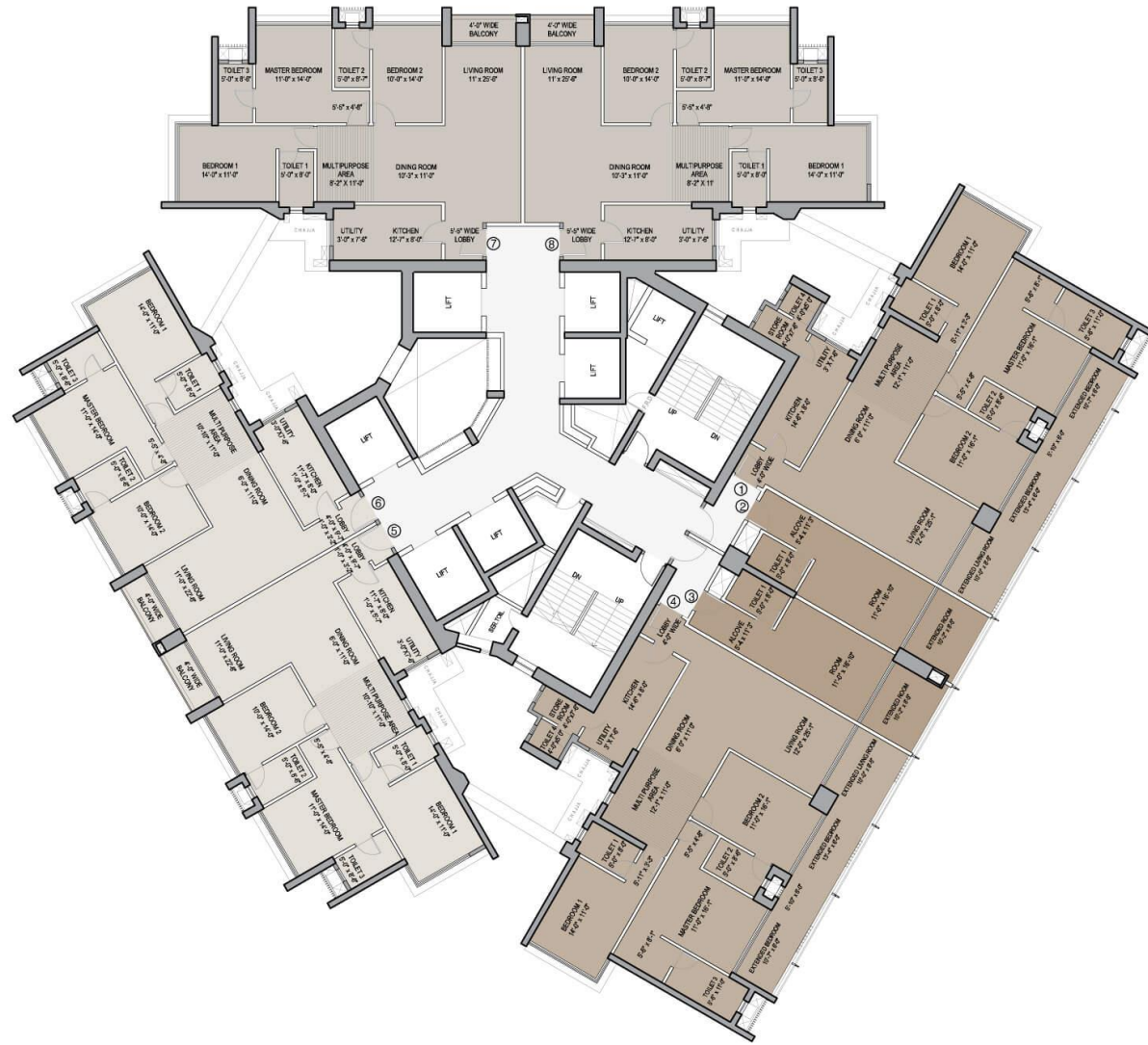
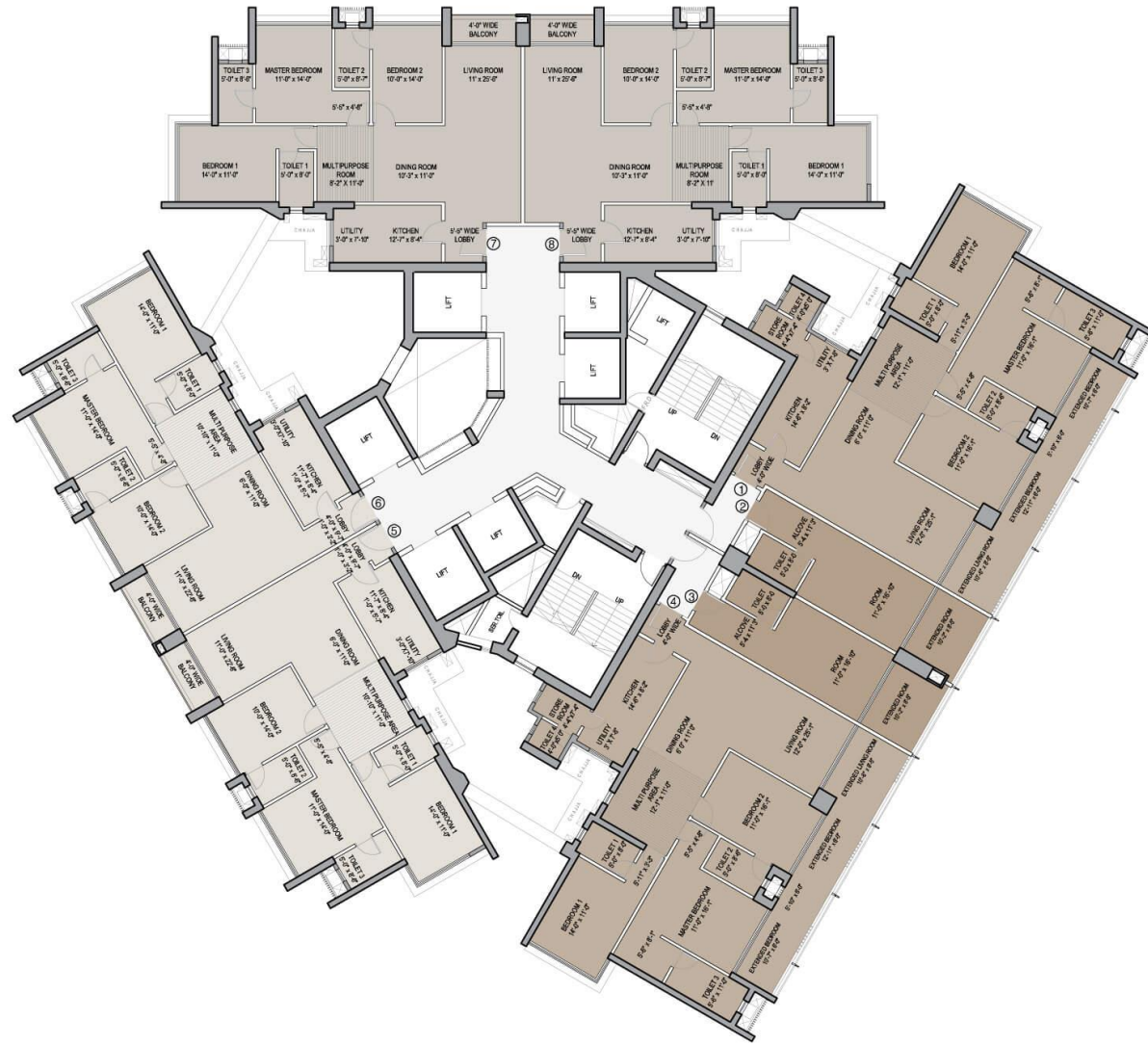


SKY CITY AT BORIVALI, MUMBAI



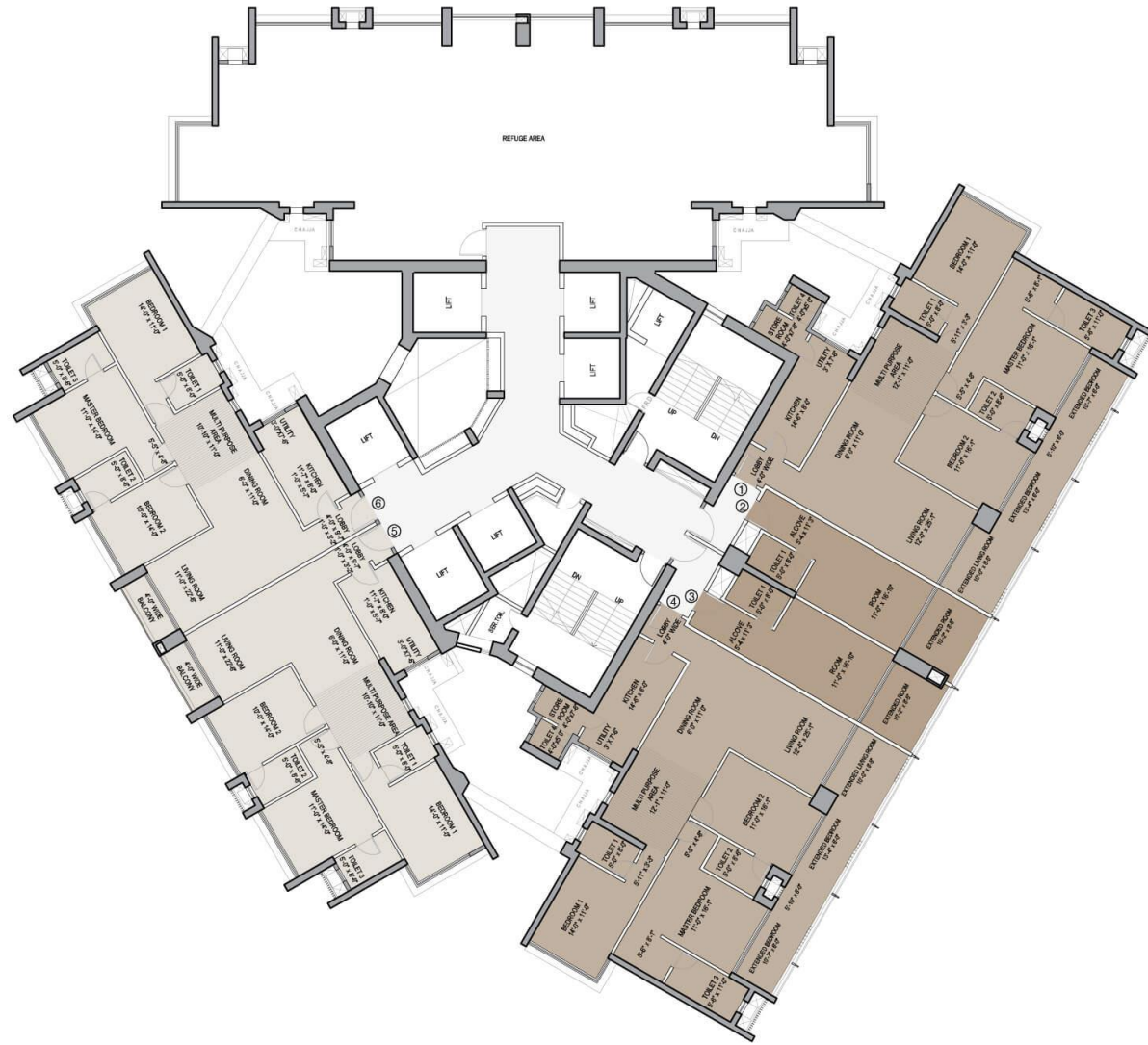
TYPICAL FLOOR PLAN - FLOORS 6,7,9 TO 14, 16 TO 21, 23 TO 28, 30 TO 34  
ZONE 1

TOWER G  
SKY CITY AT BORIVALI, MUMBAI



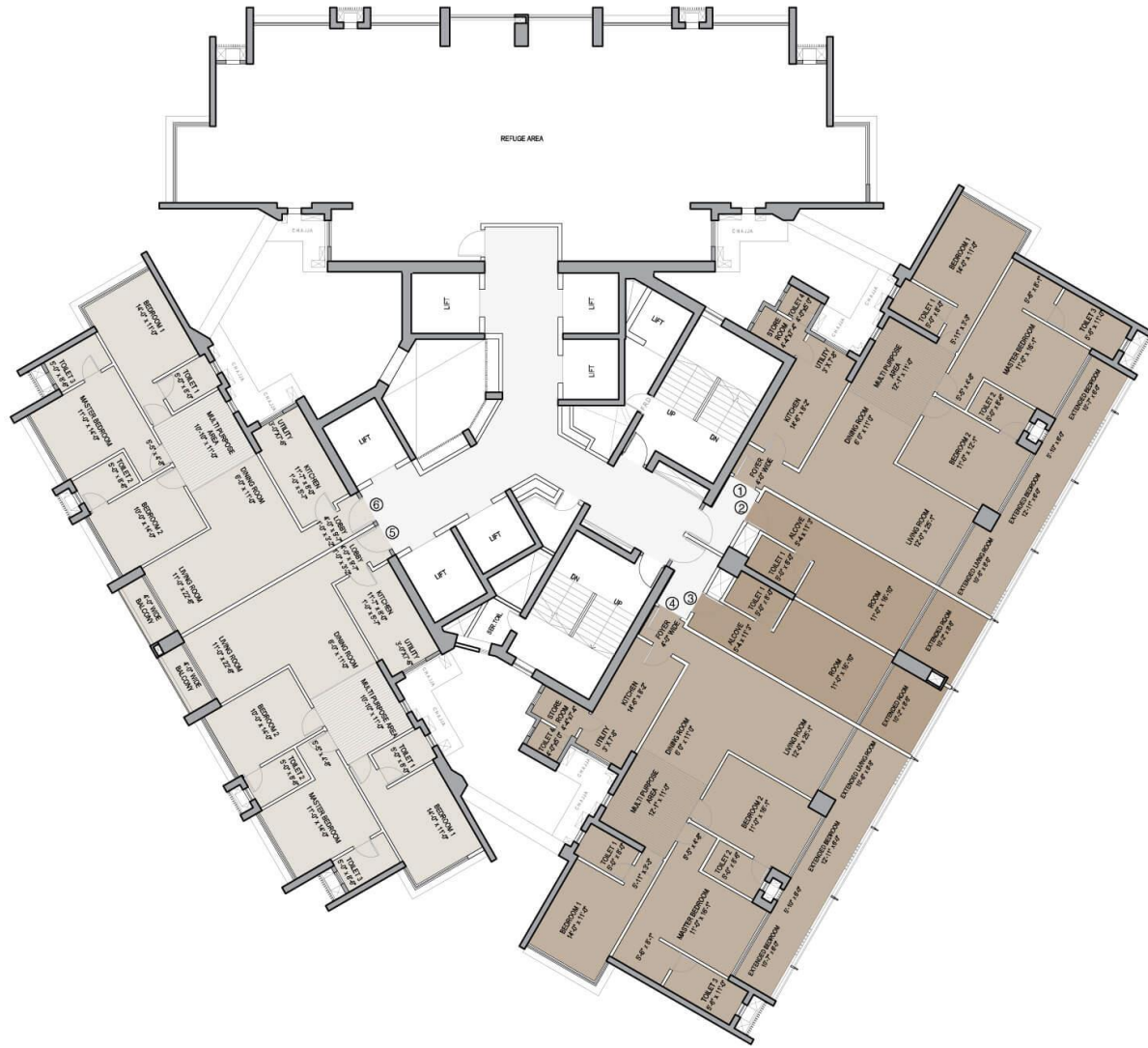
TYPICAL FLOOR PLAN - FLOORS 35,37 TO 42,44 TO 49  
ZONE 2

TOWER G  
SKY CITY AT BORIVALI, MUMBAI



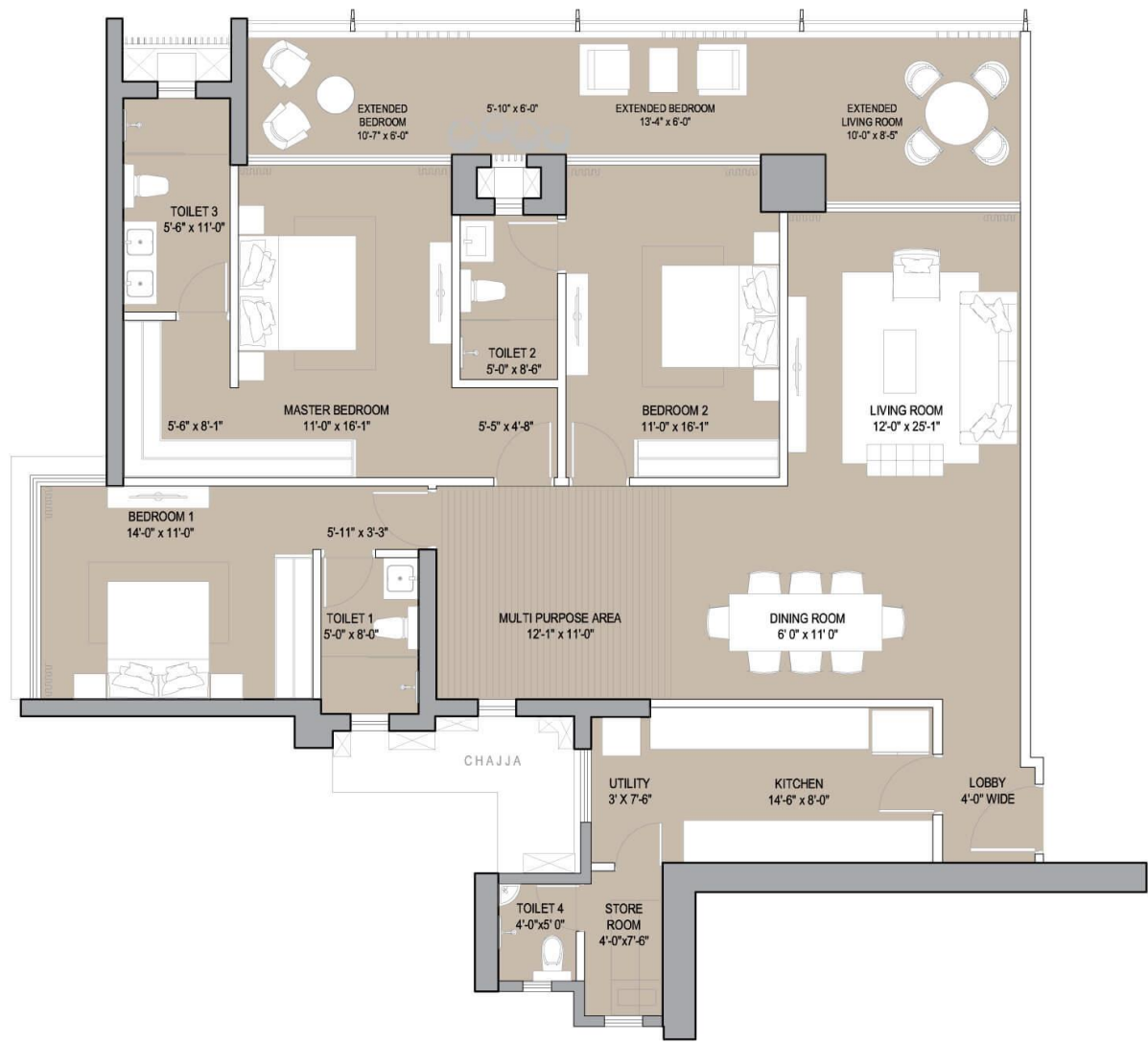
TYPICAL FLOOR PLAN - FLOORS 8,15,22,29 (REFUGE)  
ZONE 1

TOWER G  
SKY CITY AT BORIVALI, MUMBAI



TYPICAL FLOOR PLAN - FLOORS 36,43 (REFUGE)  
ZONE 2

TOWER G  
SKY CITY AT BORIVALI, MUMBAI

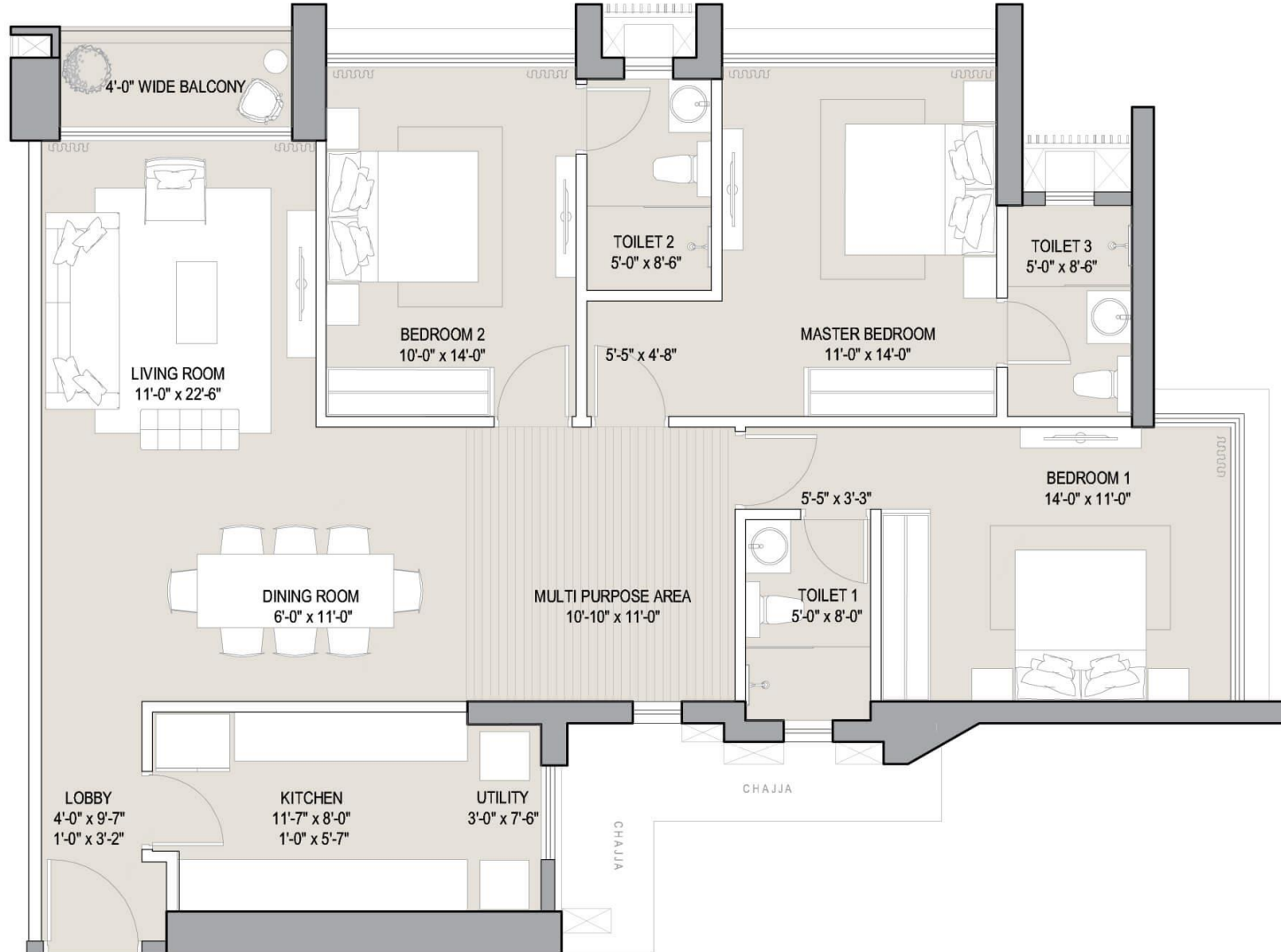


3BHK PALATIAL

SKY CITY AT BORIVALI, MUMBAI

Disclaimer: The dimension mentioned on these floor plans are as per the plans approved by MCGM. The furniture/fixture etc shown in the image are only indicative and representative (not actual) in nature and are only for the purpose of illustrating/reflecting a possible layout and do not form part of the standard specification, amenities, services etc. to be provided in respect of the flat. All specification of the flat shall be as per the AFS between the parties. This document may be modified and amended as mentioned in the proforma AFS.

Sky City Tower G - MahaRERA Registration No.: P51800047575.  
View details at <https://maharera.mahaonline.gov.in>

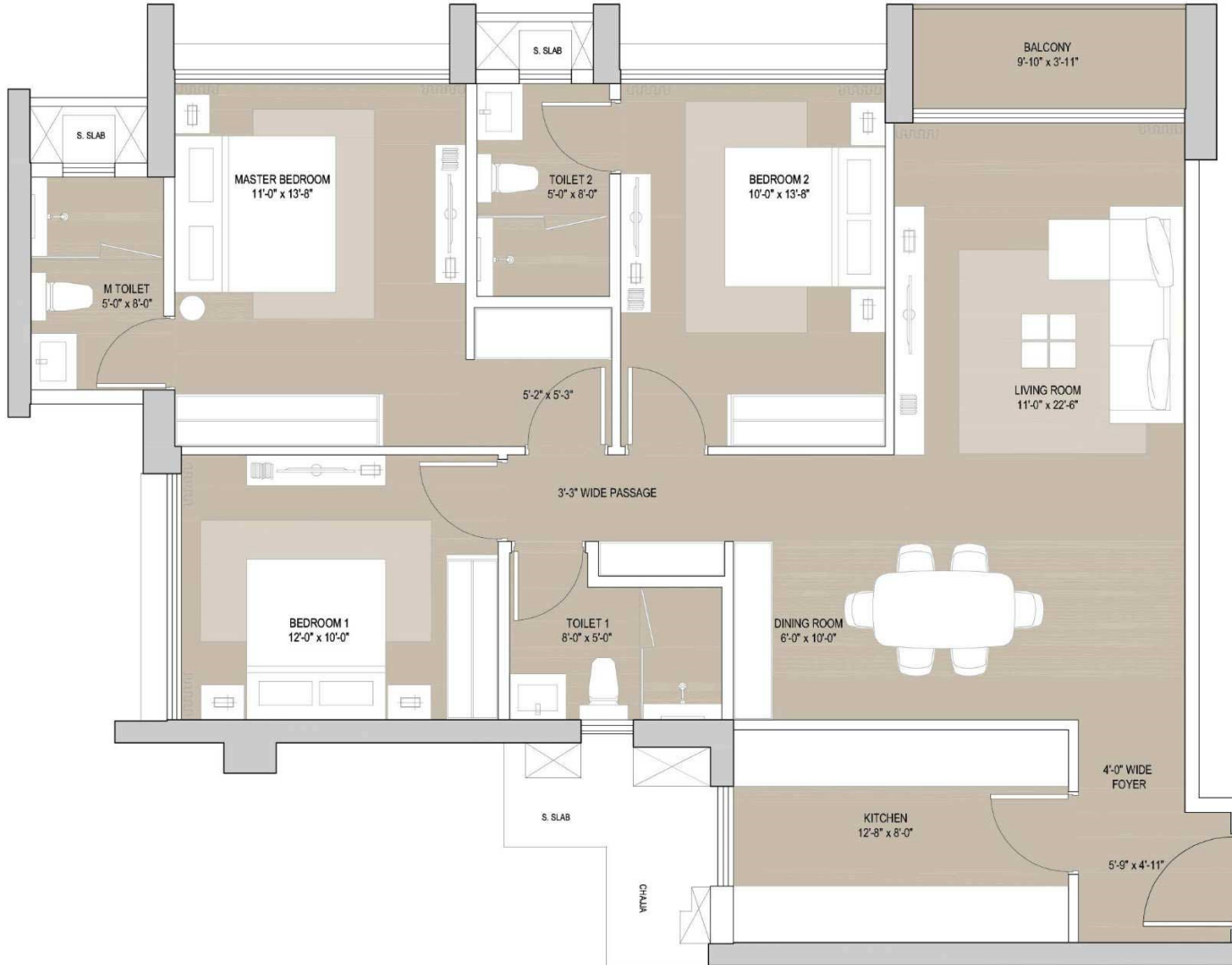


## 3BHK ELITE

## SKY CITY AT BORIVALI, MUMBAI

Disclaimer: The dimension mentioned on these floor plans are as per the plans approved by MCGM. The furniture/fixture etc shown in the image are only indicative and representative (not actual) in nature and are only for the purpose of illustrating/reflecting a possible layout and do not form part of the standard specification, amenities, services etc. to be provided in respect of the flat. All specification of the flat shall be as per the AFS between the parties. This document may be modified and amended as mentioned in the proforma AFS.

Sky City Tower G - MahaRERA Registration No.: P51800047575.  
View details at <https://maharera.mahaonline.gov.in>



3BHK GRANDE FLOOR 35 ONWARDS (ZONE-2)

Disclaimer: The dimensions mentioned on these floor plans are as per the plans approved by the MCGM and the same are subject to construction exigencies. This document may be modified and amended as mentioned in the proforma Agreement for Sale. For detailed disclaimers refer to the "Disclaimer tab" all of which are deemed to be incorporated herein.

SKY CITY AT BORIVALI, MUMBAI

Sky City Towers A to D  
 MahaRERA Registration No.: P51800003582  
 View details at <https://maharera.mahaonline.gov.in>



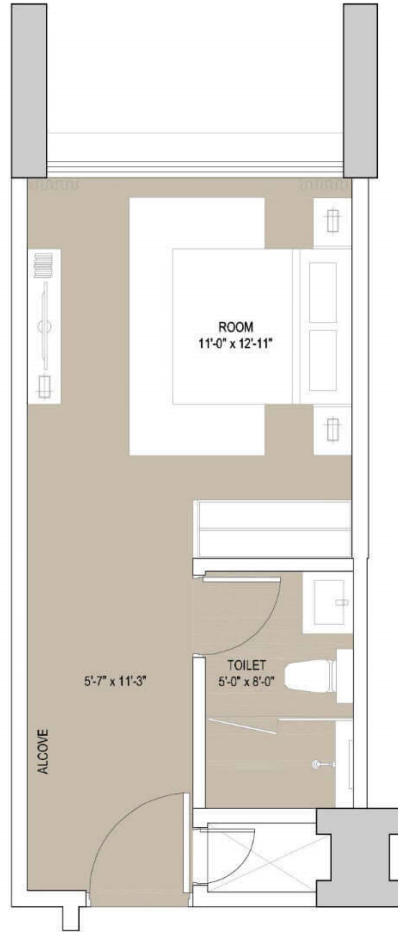


3BHK GRANDE FLOORS 1 TO 34(ZONE-1)

Disclaimer: The dimensions mentioned on these floor plans are as per the plans approved by the MCGM and the same are subject to construction exigencies. This document may be modified and amended as mentioned in the proforma Agreement for Sale. For detailed disclaimers refer to the "Disclaimer tab" all of which are deemed to be incorporated herein.

SKY CITY AT BORIVALI, MUMBAI

Sky City Towers A to D  
 MahaRERA Registration No.: P51800003582  
 View details at <https://maharera.mahaonline.gov.in>

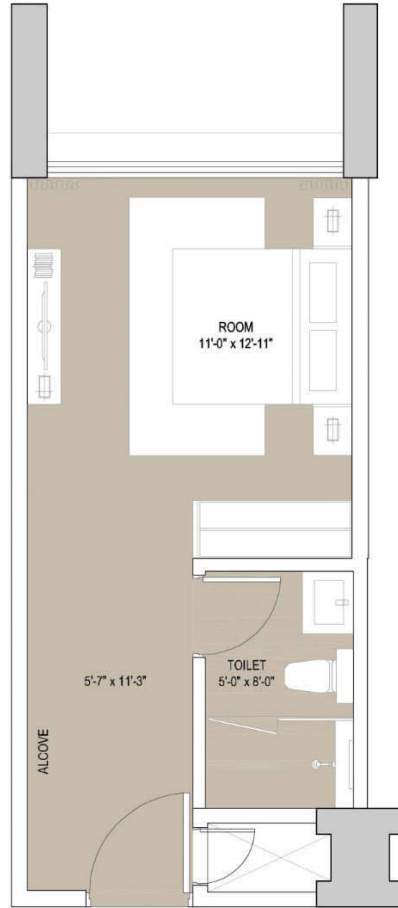


GRANDE STUDIO FLOOR 35 ONWARDS (ZONE-2)

Disclaimer: The dimensions mentioned on these floor plans are as per the plans approved by the MCGM and the same are subject to construction exigencies. This document may be modified and amended as mentioned in the proforma Agreement for Sale. For detailed disclaimers refer to the "Disclaimer tab" all of which are deemed to be incorporated herein.

SKY CITY AT BORIVALI, MUMBAI

Sky City Towers A to D  
MahaRERA Registration No.: P51800003582  
View details at <https://maharera.mahaonline.gov.in>



GRANDE STUDIO FLOORS 1 TO 34 (ZONE-1)

Disclaimer: The dimensions mentioned on these floor plans are as per the plans approved by the MCGM and the same are subject to construction exigencies. This document may be modified and amended as mentioned in the proforma Agreement for Sale. For detailed disclaimers refer to the "Disclaimer tab" all of which are deemed to be incorporated herein.

SKY CITY AT BORIVALI, MUMBAI

Sky City Towers A to D  
MahaRERA Registration No.: P51800003582  
View details at <https://maharera.mahaonline.gov.in>