


A PROJECT BY



**ASHAPURA**  
BUILDERS AND DEVELOPERS



**MOKSHIT MAJESTA**  
- A Blessful Living -

 Site Address : Survey No. 18B, Behind Sanghavi Gardens, Chera Nagar,  
Opp. Ayyapaa Temple, Manpada Cross Road, Dombivli East - 421201

 [info@ashapurabuilders.in](mailto:info@ashapurabuilders.in)  [www.ashapurabuilders.in](http://www.ashapurabuilders.in)



Maha RERA Registration  
No. P51700029434

available on - [www.maharera.mahaonline.gov.in](http://www.maharera.mahaonline.gov.in)

 Future icon - Kharghar | 84199 41177

ARCHITECT  
**A S DASTANE AND ASSOCIATES**



RCC CONSULTANTS  
**J W CONSULTANTS LLP**



ADVOCATE  
**ADV. MANISH JAIN**

The content of this brochure are purely conceptual and have no legal bindings on us. Developers reserve the right to amend the layout plans, number of floors & units, elevation, color scheme, specification and amenities etc. without notice.

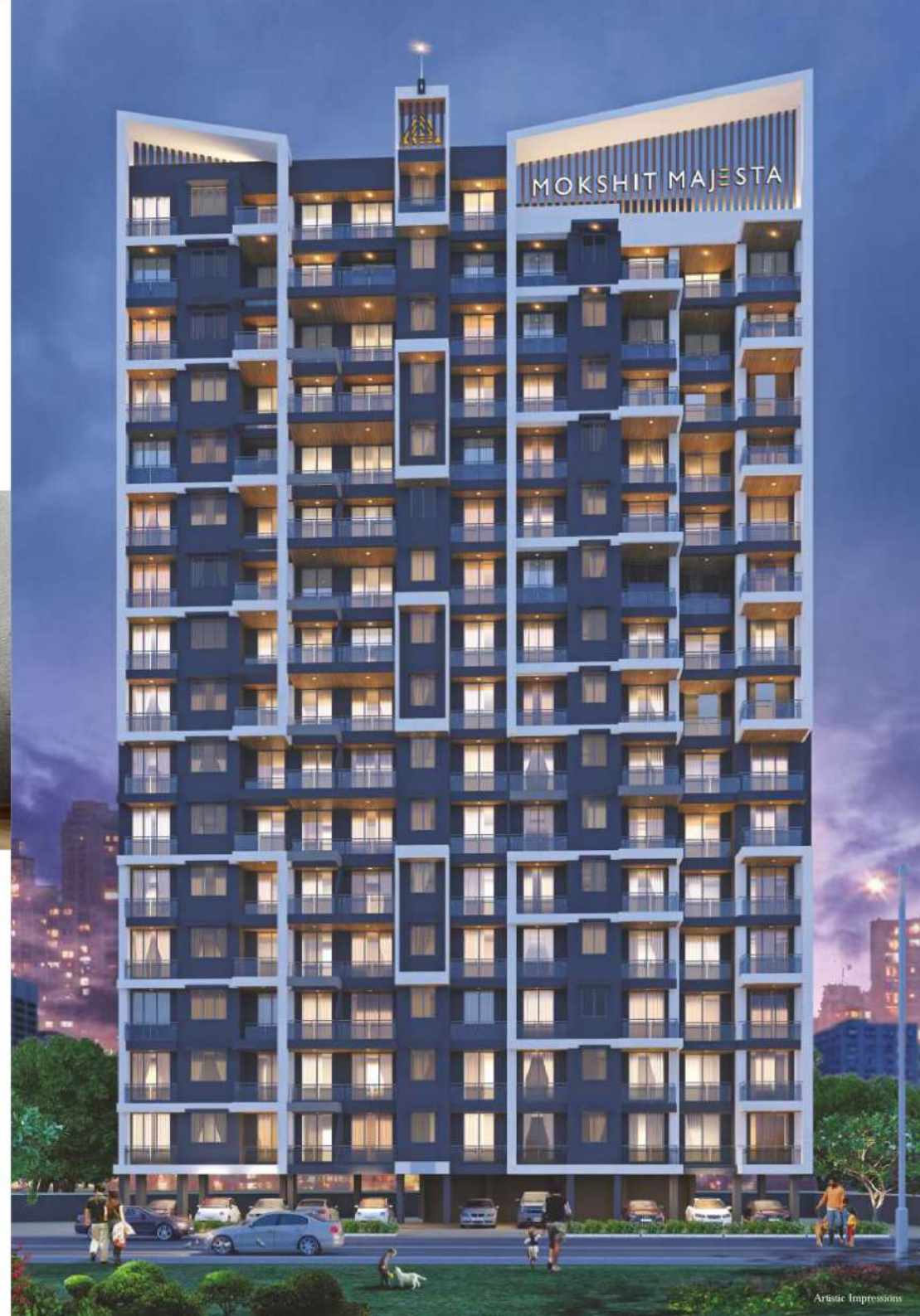
# welcome

to Mokshit Majesta

The Mokshit Majesta here offer the luxury of living with refreshing panoramic views.

The exquisite architecture, where everyday will start with a fresh page.

Colors, textures, tastes, scents, sounds will be heightened by the crisp open air that will connect you with nature, nurturing the rare and real moments of life.



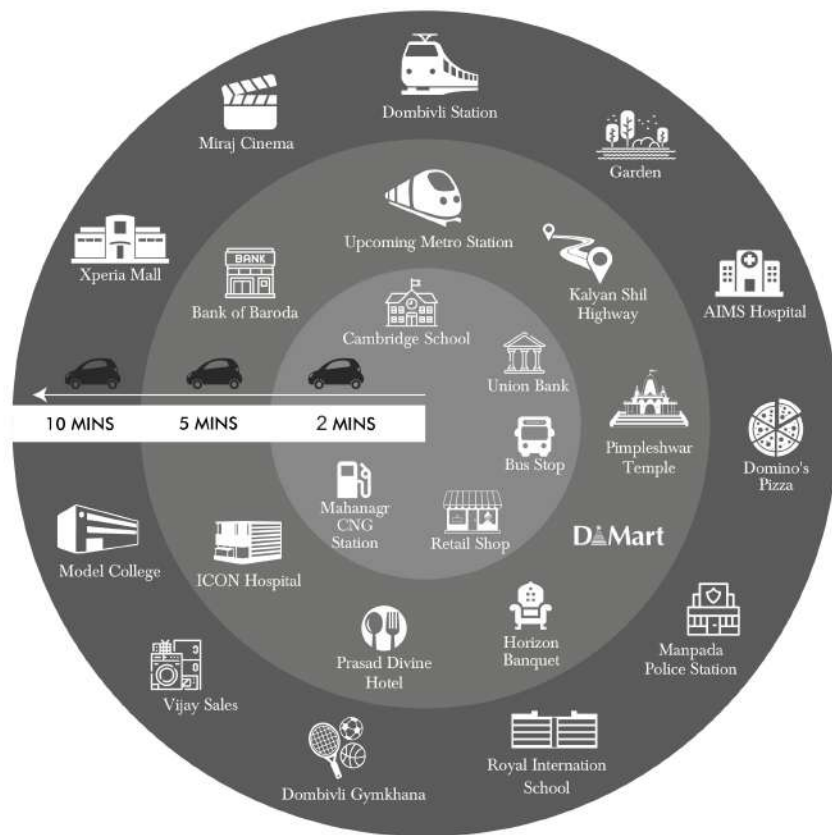
## Project Features

- ◆ Exclusive 6+16 Storey Residential Project.
- ◆ 'A' Class construction with magnificent Architectural Elevation.
- ◆ Earth quake resistant RCC structure.
- ◆ Good Lightening & Ventilation in all rooms.
- ◆ Stilt car parking.
- ◆ Power backup for Lift parking & Passage lights.
- ◆ Excellent planning with no wastage in all rooms.
- ◆ Stylist 1 & 2 BHK Apartments.
- ◆ Project at the Center of Optimal Proximity.
- ◆ Located in Heart of the City.



# Great Accessibility

a wonderful life right at your doorstep.



In the cosmopolitan like Dombivli, where everything is compact and located far from the desired needs, The Mokshit Majesta is an exclusive address bestowed with excellent connectivity. Situated in the heart of Dombivli, the prominent location of Dombivli with major schools, colleges, malls, multiplexes, banks, hospitals nearby, The Mokshit Majesta is truly a world of conveniences for you. Live here and experience the world coming to you at your doorsteps.

## OTHER UPCOMING INFRASTRUCTURE PROJECTS



Mumbai Metro Line 12  
(Taloja - Kalyan)



Vitar - Alibaug  
Corridor



Upper Thane -  
Dombivli Bridge



Katali - Airoli  
Freeway



Vasai - Kalyan  
Inland Waterways

OPTIMA ▶



ULTIMA ▼



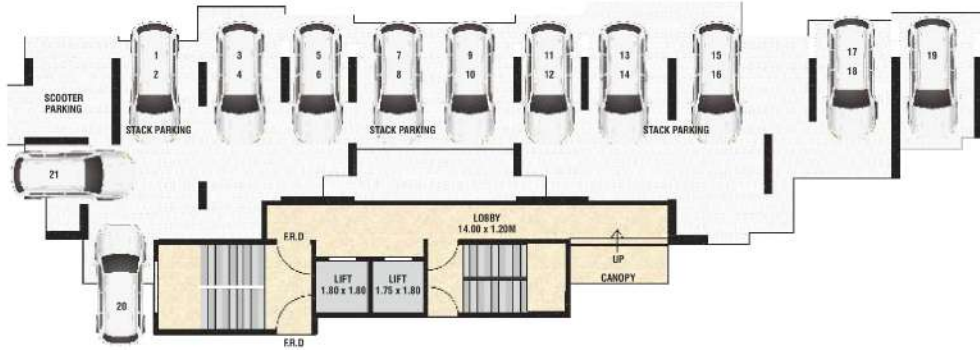
1 BHK

ISOMETRIC VIEW



2 BHK

ISOMETRIC VIEW



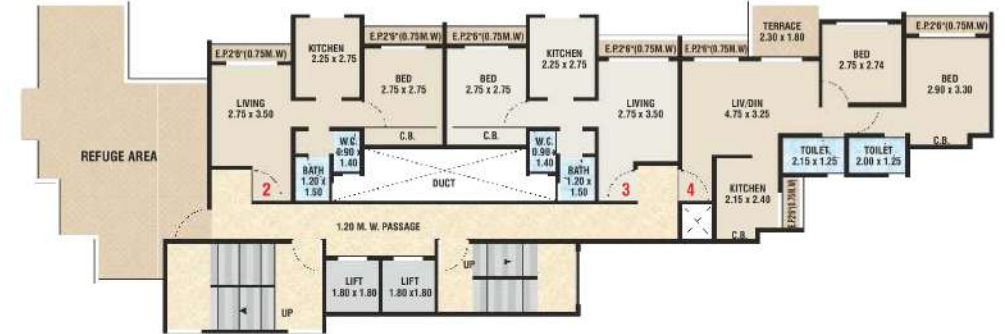
GROUND  
FLOOR PLAN



2<sup>ND</sup>, 4<sup>TH</sup>, 6<sup>TH</sup>, 10<sup>TH</sup>, 12<sup>TH</sup>  
FLOOR PLAN



1<sup>ST</sup>, 3<sup>RD</sup>, 5<sup>TH</sup>, 7<sup>TH</sup>, 9<sup>TH</sup>, 11<sup>TH</sup>  
FLOOR PLAN



EIGHTH  
FLOOR PLAN

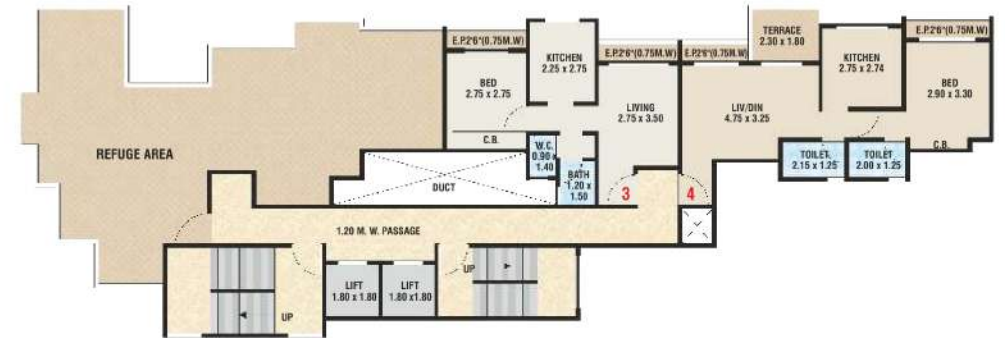






THIRTEENTH  
FLOOR PLAN

FIFTEENTH  
FLOOR PLAN



FOURTEENTH  
FLOOR PLAN

SIXTEENTH  
FLOOR PLAN

# Find your space

Living experience should not be confined within some concrete pillars, or be defined by a number on the floor plan. It should be an amalgamation of space designed to be a heaven for every individual. That's why when you step into Mokshit Majesta, we know you won't just find your dream home, you'll find your space.



## specification

-  **Structure :**  
Earthquake resistant RCC frame structure as per structure design
-  **Finishing :**  
Internal smooth plaster with two coat putty with emulsion paint & External plaster with 100% acrylic paint
-  **Doors :**  
Decorative entrance door, wooden door frames for other rooms & marble door frames for bath & WC
-  **Windows :**  
Powder coated aluminum sliding windows in all the room
-  **Flooring :**  
Vitrified tiles flooring in living, bed room & kitchen
-  **Kitchen :**  
Granite platform with SS Sink and ceramic tile dado above kitchen platform
-  **Bath / WC :**  
Concealed plumbing with good quality sanitary & plumbing fitting. Ceramic tile flooring in bath/WC & glazed tiles dado up to full height
-  **Electrification :**  
Geyser point in all bathroom & concealed copper wiring with modular Switches, cable points in living room

