

Satnam Leela

2 & 3BHK Boutique Apartments



L Nagpal Builders, is an organization of Apex repute focused on creating luxury landmark spaces in Mumbai. With a muscle strong foundation and impeccable business ethics, we've successfully completed over 15 buildings in the past 20 years. Our state of the art elevations speak for themselves. Over the years, we have grown to be one of Suburbs largest corporations with assurances of top notch qualities, timely delivery, ethical business values & 100% customer satisfaction. Working together with our employees, business partners, clients and customers, we are helping shape the look of Mumbai's suburban region. We have Successfully Constructed more than 5 lakh square feet at some of the most sought locations in Mumbai.

A One-of-its kind building in the neighbourhood

At a height of 11 storeys, “Satnam Leela” is an iconic residential tower featuring 2BHK & 3BHK options. The building's strikingly unique elevation and façade design is what makes it stand out from the other buildings in the area. Crafted to perfection, this building is simply going to be one-of-its kind in the Sindhi Society neighborhood overlooking the Sindhi Gymkhana.



TYPES OF UNITS

- 2BHK, 3BHK and 3BHK Penthouse



BUILDING

- G + Mezanine + 10 storeys
- Grand Entrance lobby
- Rooftop Lounge



APPROVALS

- Full Building is approved by BMC
- RERA no. – P51900045357





With Modern Elevation & Amenities

COMMON AMENITIES



ROOFTOP LOUNGE

with Gazebo, Outdoor Bar & Seating



ELEVATORS

2 High Speed Elevators with ARD system



EV CHARGING

Electric Charging Space for 2 & 4 Wheelers



LOBBY

Road facing exquisite lobby with Aircodnitioner



PARKING

Individual car park for all apartments



SECURITY

round the clock security with 24/7 CCTV camera



Artist's Impression

An executive
class lobby



Artist's Impression

Rooftop Lounge for a Delightful Evening





Artist's Impression

Premium State-of-the-art Interiors

Unique Interior Features



FLOORING
Marble pattern
flooring tiles



CEILING
Decorative ceiling
with ample LED lighting



FRENCH WINDOWS
for enhanced
light and ventilation



Artist's Impression



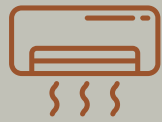
BATHROOM

with Jaquar/Kludi fittings
and glass partition



**SEMI MODULAR
KITCHEN**

with Hob & Chimney



AIR CONDITIONER

Daikin/Mitsubishi Split AC's
throughout the apartment



FIRE RESISTANCE

Main door will be fire resistant



Artist's Impression

3BHK Typical Floor Plan

4th, 5th, 6th, 9th FLOOR
FLAT NO.1 RERA CARPET AREA = 932.65 SQ.FT



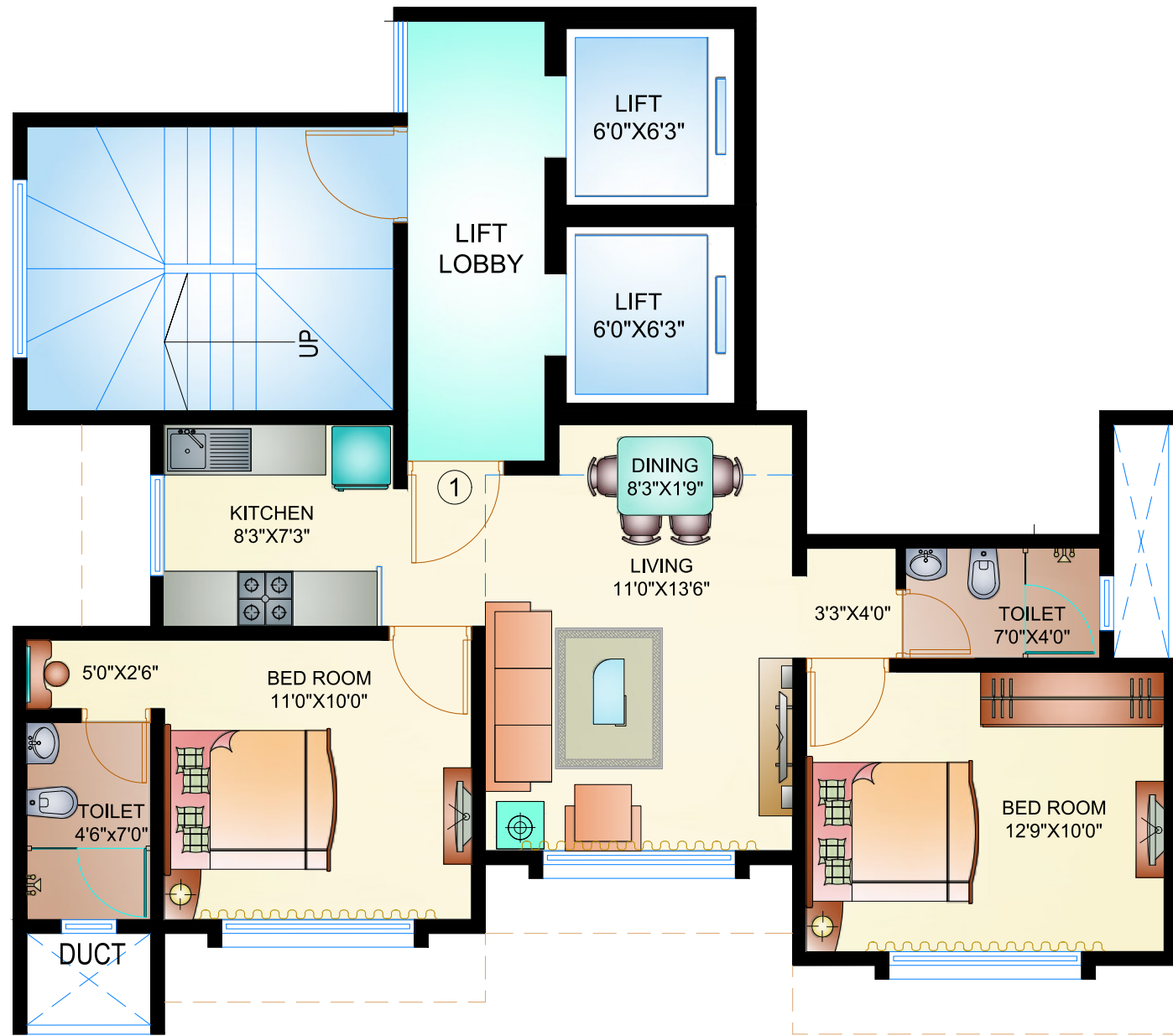
2BHK Typical Floor Plan

4th, 5th, 6th, 9th FLOOR
FLAT NO.4 RERA CARPET AREA = 650.00 SQ.FT



Option 1 & 2

2BHK Floor Plan



M LEVEL
 FLAT NO.-1 RERA CARPET AREA = 590.30 SQ.FT



7TH. FLOOR
 FLAT NO.-1 RERA CARPET AREA = 675.45 SQ.FT.

Penthouse floor plan

10TH FLOOR

RERA CARPET AREA = 932.65 SQ.FT

TERRACE AREA = 650 SQ.FT



In close Proximity To:



RECREATIONAL

- Sindhi Society Gymkhana
- The Acres Club
- The Bombay Presidency Golf Club
- Chimni Garden



OTHER LANDMARKS

- Pink Corner
- State Bank of India
- Chaggan Mitha Petrol Pump
- Jhama Sweets
- Chembur Police Station

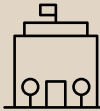
OUR OTHER BUILDINGS IN THE AREA

- Satnam Sharan



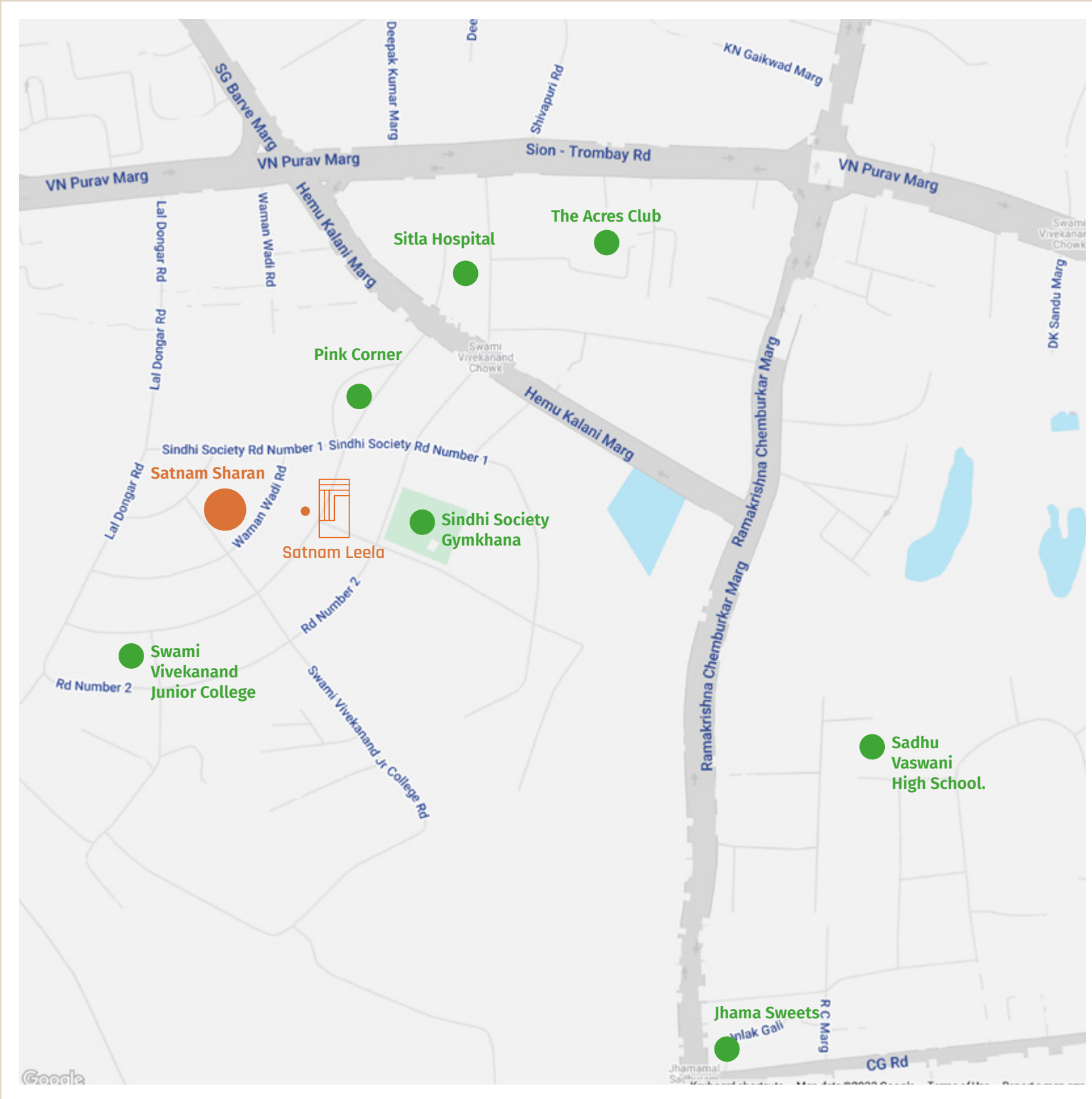
HOSPITALS

- Surana Sethia Hospital
- Sitla Hospital



SCHOOLS / COLLEGES

- Swami Vivekanand Junior College
- Sadhu Vaswani High School.



Design Arch. – Simpson Sutari

Liasoning Arch. – Priyank Bhatt

Legal – Gradea Sal

Structural engineer – FRAMES

Developer – L Nagpal Developers



SITE ADDRESS :

Satnam Leela (Leela Niwas),
Plot No. 86, Sindhi Society, Chembur 400 071

OFFICE ADDRESS :

PH House, Gr. & 1st Floor,
14th Road, Khar (W), Mumbai 400 052

DISCLAIMER

All images and any other information contained herein are indicative of the project, “NN Tower”. The images are purely creative/artistic concepts and may not be actual representations of the Project. The website and all promotional material are a guide only and do not constitute an offer or contract. The terms and conditions mentioned in the Agreement for Sale shall be final.

CHANNEL PARTNER



Saurav Kumar

Indextap Technologies Pvt. Ltd.

 **9619229068**

Call