



To know more scan here



Corporate Address: Arkade House, Next to Children's Academy, Ashok Nagar, Kandivali (E), Mumbai - 400 101. | **Web:** [www.arkade.in](http://www.arkade.in)

For More Information  
**Tel.:** 92228 92229 | **Web:** [www.arkadeaspire.com](http://www.arkadeaspire.com)

**Site Address:** Arkade Aspire, Jay Prakash Nagar, Goregaon (East), Mumbai, Maharashtra 400063.

**RERA Registration no.** P51800034603 details available at <https://maharera.mahaonline.gov.in>

Disclaimer: This advertisement does not constitute an offer and/or acceptance under any statute of any nature whatsoever. The terms and conditions of sale shall be only as incorporated in Booking Form/ Cost Sheet and Agreement for Sale. \*Prices are subject to change without any prior notice or intimation. The information/details contained herein are purely indicative and may/may not form part of the final Project. The information/ representation made/shown herein is only designer's/architect's conception with the intention to depict tentative concept of the Project and is only indicative of the envisaged developments and the same is subject to approvals from local authorities. We reserve our rights to make additions, deletions, alterations or amendments as and when we deem fit and proper and in accordance with applicable laws. No representations or warranties are made or intended and no commitments are being hereby given as to the accuracy or totality of the "Arkade Aspire" Project as represented herein.

The Planning as shown herein may vary/differ due to construction contingencies and site conditions, etc., consequently actual development and any other aspect may differ from what is portrayed herein. All layouts, plans, specifications, dimensions, designs, measurements and locations are indicative and not to scale and are subject to variation as may be required. All dimensions are approximate and subject to construction variances. Interior designing shown in the flat/unit is only for representation purpose.

The picture of the proposed flat/unit and all furniture's, fixtures, items, electronic goods, amenities, landscaping, accessories etc. specified therein are only for the purpose of show casing the flat/unit and we are not liable / required to provide any furniture, items, electronic goods, amenities, accessories etc. as displayed herein. The views shown herein may vary over period of time and views from different floors will also vary.



**The Vue@**  
**ARKADE ASPIRE**  
THE PERFECT LIFE  
Goregaon East

**VIEWS  
THAT'LL  
MESMERIZE  
YOU.**

**BINGE WATCH ENDLESS  
GREEN FORESTS SPREAD OUT TILL  
THE HORIZON, ON DEMAND.**



A tall, modern apartment building at dusk. The building features two towers of 22 floors each, with a glass-walled ground floor and a landscaped podium. The sky is a deep blue, and the city lights are visible in the background. The building is illuminated from within, and the ground floor is lit up, showing a modern interior. The podium has a green roof and is surrounded by trees and landscaping. The overall scene is a mix of modern architecture and natural elements.

**STUNNING APARTMENTS  
WITH BREATHTAKING VIEWS.**  
2 Towers of 22 floors each.

# THE VUE LOCATED AT THE MOST PEACEFUL AND SCENIC LOCATION OF JAY PRAKASH NAGAR



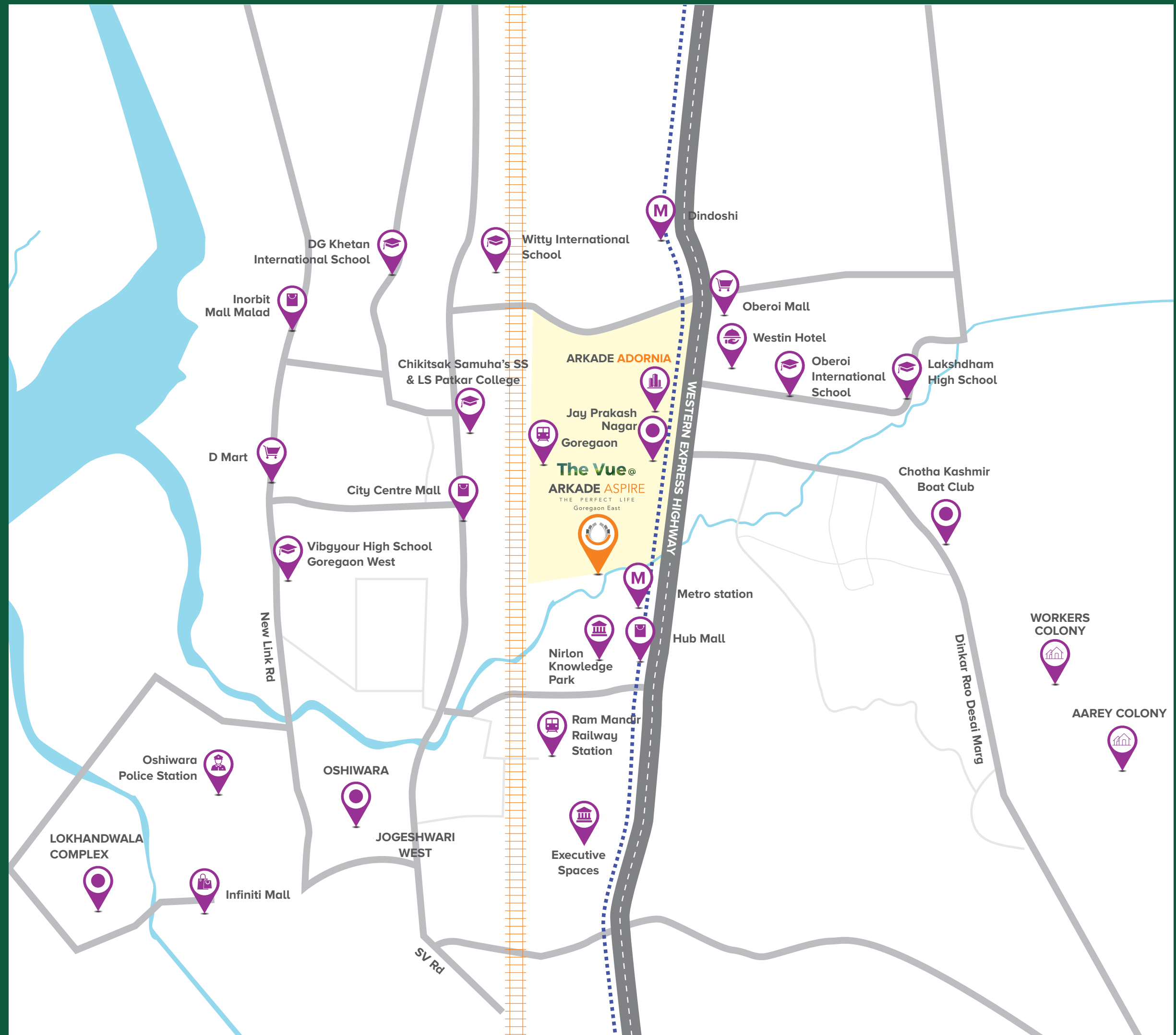
Rail : 0.9 km.



Road - WEH : 0.7 km.



Metro : 3.0 km.



# MASTER LAYOUT

## LEGEND

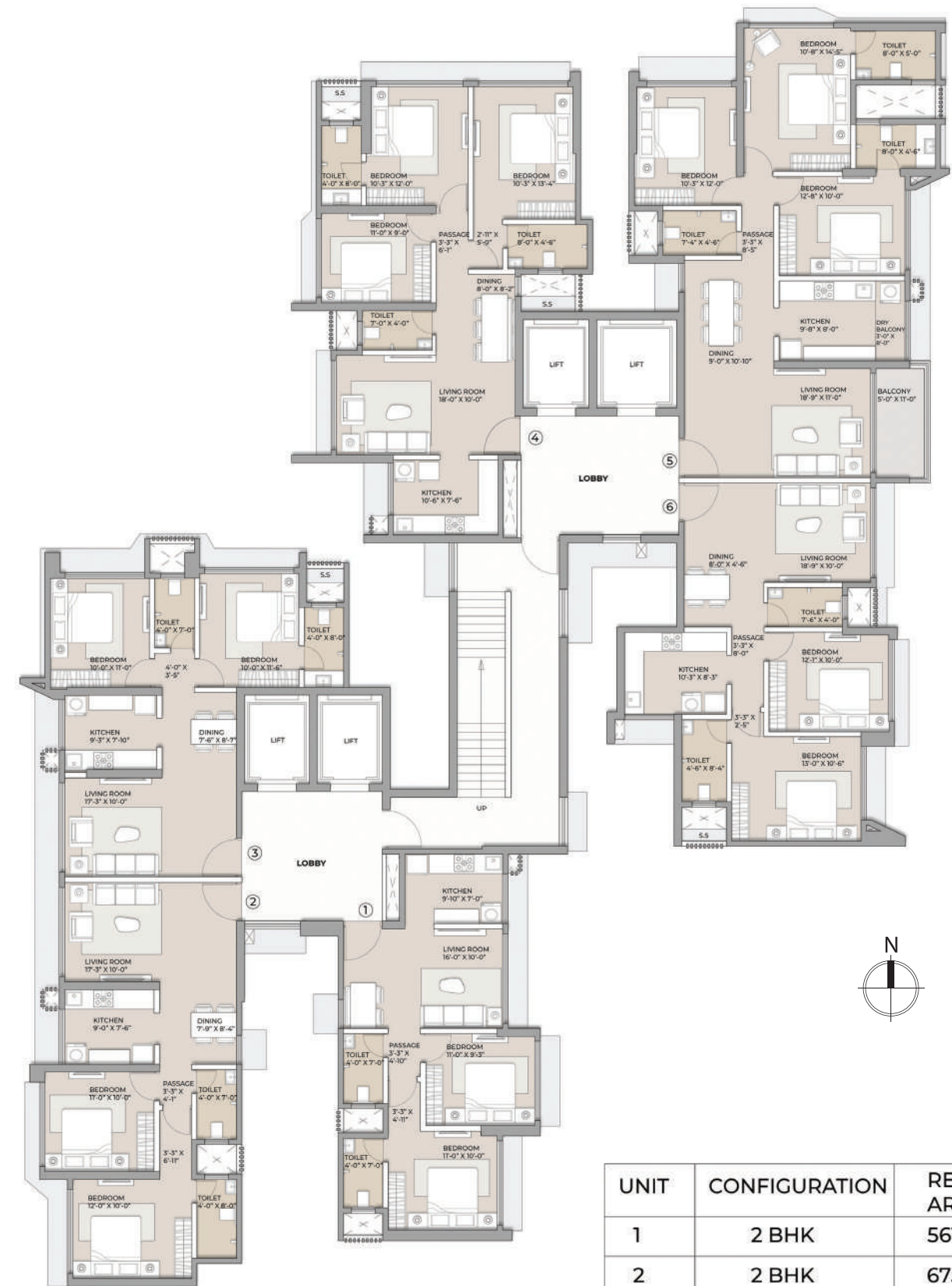
- |   |                             |    |                      |    |                           |
|---|-----------------------------|----|----------------------|----|---------------------------|
| 1 | KIDS POOL                   | 10 | ASSEMBLY AREA        | 19 | BANQUET ROOM              |
| 2 | INFINITY EDGE POOL          | 11 | FLAG POLE            | 20 | PANTRY                    |
| 3 | POOL DECK                   | 12 | LAWN                 | 21 | KIDS INDOOR ACTIVITY AREA |
| 4 | POOL DECK LOUNGE            | 13 | PERGOLA              | 22 | SPORTS LOUNGE             |
| 5 | JOGGING TRACK               | 14 | SOCIETY OFFICE       | 23 | KIDS PLAY AREA            |
| 6 | GYMNASIUM - YOGA            | 15 | INDOOR GAME ZONE     | 24 | STEPPED SITTING AREA      |
| 7 | ENTRANCE FOYER              | 16 | TODDLERS PLAY        | 25 | MULTIPLAY COURT           |
| 8 | HERBS AND VEGETABLES GARDEN | 17 | OUTDOOR SITTING AREA | 26 | BIRDS HOUSING COLONY      |
| 9 | SENIOR CITIZEN'S CORNER     | 18 | KIDS ACTIVITY AREA   |    |                           |

## Typical Floor Plan - Wing A



UNIT	CONFIGURATION	RERA CARPET AREA
1	2 BHK	602 SQ.FT
2	2 BHK	675 SQ.FT
3	2 BHK	537 SQ.FT
4	2 BHK	702 SQ.FT
5	3 BHK	974 SQ.FT
6	3 BHK	869 SQ.FT

## Typical Floor Plan - Wing B



UNIT	CONFIGURATION	RERA CARPET AREA
1	2 BHK	561 SQ.FT
2	2 BHK	675 SQ.FT
3	2 BHK	647 SQ.FT
4	3 BHK	869 SQ.FT
5	3 BHK	1058 SQ.FT
6	2 BHK	702 SQ.FT