

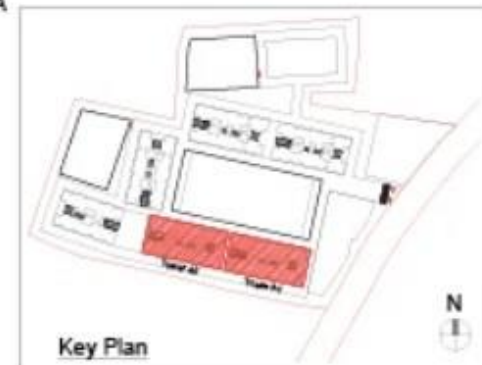


REFUGE FLOOR

(Tower A1, A2)



No.	Flat No.	Type	Covered Area		Balcony		Balcony Dry		Total Area	
			Sq. M.	Sq. Ft.	Sq. M.	Sq. Ft.	Sq. M.	Sq. Ft.	Sq. M.	Sq. Ft.
1	801, 1301, 1901,	3 BHK Luxurious	90.79	978.74	0.57	62.25	2.84	30.42	100.00	1,070
02	802, 1302, 1902,	2 BHK - A	83.86	905.56	7.87	84.71	2.57	27.86	74.13	790
03	803, 1303, 1903,									
06	806, 1306, 1906,									
07	807, 1307, 1907									
04	804, 1304, 1904,	3 BHK Premium-A	76.34	821.72	0.28	88.81	2.84	30.42	87.34	920
05	805, 1305, 1905									
8	808, 1308, 1908	2 BHK - B	82.89	753.37	0.57	62.25	2.84	30.42	81.35	874



Key Plan

TYPICAL FLOOR

(Tower A1, A2)



No.	Flat No.	Type	Carpet Area		Balcony		Balcony Dry		Total Area	
			Sq. M.	Sq. Ft.	Sq. M.	Sq. Ft.	Sq. M.	Sq. Ft.	Sq. M.	Sq. Ft.
01	101, 201, 301, 401, 501, 601, 701, 801, 901, 1101, 1201, 1401, 1501, 1601, 1701, 1801, 2001, 2101, 2101, 2201, 190, 200, 200, 400, 500, 600, 700, 800, 900, 1100, 1200, 1400, 1500, 1600, 1700, 1800, 2000, 2100, 2100, 2200	3 BHK Luxurious	66.79	720.74	6.57	70.25	2.84	30.42	100.00	1,079
02	102, 202, 302, 402, 502, 602, 702, 802, 902, 1102, 1202, 1402, 1502, 1602, 1702, 1802, 2002, 2102, 2102, 2202	2 BHK - A	63.89	690.56	7.87	84.71	2.57	27.88	74.33	790
03	103, 203, 303, 403, 503, 603, 703, 803, 903, 1103, 1203, 1403, 1503, 1603, 1703, 1803, 2003, 2103, 2103, 2203	3 BHK Premium A	78.34	842.72	8.28	89.01	2.84	30.42	87.34	930



REFUGE FLOOR

(Tower A3)



No.	Flat No.	Type	Carpet Area		Balcony		Balcony Dry		Total Area	
			Sq. M.	Sq. Ft.	Sq. M.	Sq. Ft.	Sq. M.	Sq. Ft.	Sq. M.	Sq. Ft.
01	801,1301,1801	2 BHK - A	63.69	685.56	7.87	84.71	2.57	27.66	74.13	798
02	802,1302,1802									
03	803,1303,1803									
04	804,1304,1804									
05	805,1305,1805									
06	806,1306,1806									
07	807,1307,1807									



Key Plan

TYPICAL FLOOR

(Tower A3)



No.	Flat No.	Type	Carpet Area		Balcony		Balcony Dry		Total Area	
			Sq. M.	Sq. Ft.	Sq. M.	Sq. Ft.	Sq. M.	Sq. Ft.	Sq. M.	Sq. Ft.
01	101,201,301,401,501,601,701,801,901,1001,1101,1201,1401,1501,1601,1701,1801,2001,2101,2201,	2 BHK - A	63.69	685.56	7.87	84.71	2.57	27.66	74.13	796
02	102,202,302,402,502,602,702,802,902,1102,1202,1402,1502,1602,1702,1802,2002,2102,2202,									
03	103,203,303,403,503,603,703,803,903,1103,1203,1403,1503,1603,1703,1803,2003,2103,2203,									
04	104,204,304,404,504,604,704,804,904,1104,1204,1404,1504,1604,1704,1804,2004,2104,2204,									
05	105,205,305,405,505,605,705,805,905,1105,1205,1405,1505,1605,1705,1805,2005,2105,2205,									
06	106,206,306,406,506,606,706,806,906,1106,1206,1406,1506,1606,1706,1806,2006,2106,2206,									
07	107,207,307,407,507,607,707,807,907,1107,1207,1407,1507,1607,1707,1807,2007,2107,2207,									
08	108,208,308,408,508,608,708,808,908,1108,1208,1408,1508,1608,1708,1808,2008,2108,2208									



Key Plan



REFUGE FLOOR

(Tower A4)



No.	Flat No.	Type	Carpet Area		Balcony		Balcony Dry		Total Area	
			Sq. M.	Sq. Ft.	Sq. M.	Sq. Ft.	Sq. M.	Sq. Ft.	Sq. M.	Sq. Ft.
01	801,1301,1801	2 BHK- B	69.99	753.37	8.57	92.25	2.64	28.42	81.20	874
02	802,1302,1802	2 BHK- C	64.18	690.83	7.87	84.71	2.57	27.66	74.62	803
03	803,1303,1803									
06	806,1306,1806									
07	807,1307,1807	3 BHK Premium-B	76.34	821.72	8.26	88.91	2.64	28.42	87.24	939
04	804,1304,1804									
05	805,1305,1805									
08	808,1308,1808	3 BHK Luxurious	88.79	955.74	8.57	92.25	2.64	28.42	100.00	1,076



Key Plan

TYPICAL FLOOR

(Tower A4)



No.	Flat No.	Type	Carpet Area		Balcony		Balcony Dry		Total Area	
			Sq. M.	Sq. Ft.	Sq. M.	Sq. Ft.	Sq. M.	Sq. Ft.	Sq. M.	Sq. Ft.
01	101,201,301,401,501,601,701,801,1001,1101,1201,1401,1501,1601,1701,1901,2001,2101,2201,	3 BHK Luxurious	68.79	955.74	8.57	92.25	2.64	28.42	100.00	1,076
02	102,202,302,402,502,602,702,802,1002,1102,1202,1402,1502,1602,1702,1902,2002,2102,2202,	2 BHK - C	64.18	690.83	7.67	84.71	2.57	27.66	74.62	803
04	104,204,304,404,504,604,704,804,1004,1104,1204,1404,1504,1604,1704,1904,2004,2104,2204,	3 BHK Premium-B	76.34	821.72	8.26	88.91	2.64	28.42	87.24	939



Key Plan



2 BHK-A



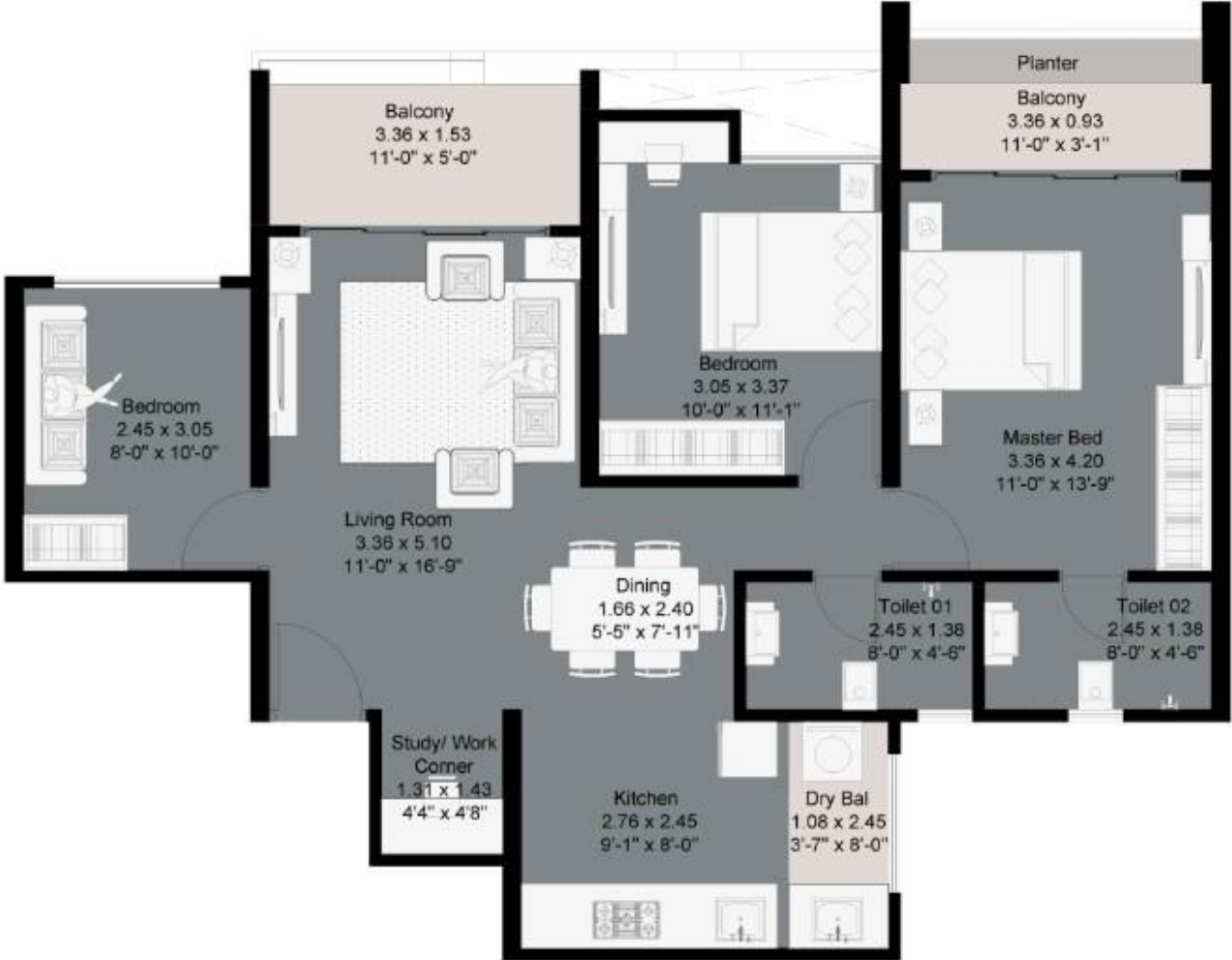
Type	Carpet Area		Balcony		Balcony Dry		Total Area	
	Sq. M.	Sq. Ft.	Sq. M.	Sq. Ft.	Sq. M.	Sq. Ft.	Sq. M.	Sq. Ft.
2 BHK- A	63.69	685.56	7.87	84.71	2.57	27.66	74.13	798

2 BHK-C



Type	Carpet Area		Balcony		Balcony Dry		Total Area	
	Sq. M.	Sq. Ft.	Sq. M.	Sq. Ft.	Sq. M.	Sq. Ft.	Sq. M.	Sq. Ft.
2 BHK- C	64.18	690.83	7.87	84.71	2.57	27.66	74.62	803

3 BHK-Premium-B



Type	Carpet Area		Balcony		Balcony Dry		Total Area	
	Sq. M.	Sq. Ft.	Sq. M.	Sq. Ft.	Sq. M.	Sq. Ft.	Sq. M.	Sq. Ft.
3 BHK Premium-B	76.34	821.72	8.26	88.91	2.64	28.42	87.24	939

3 BHK-Luxurious



Type	Carpet Area		Balcony		Balcony Dry		Total Area	
	Sq. M.	Sq. Ft.	Sq. M.	Sq. Ft.	Sq. M.	Sq. Ft.	Sq. M.	Sq. Ft.
3 BHK Luxurious	88.79	955.74	8.57	92.25	2.64	28.42	100.00	1,076