



PRAJAPATI<sup>®</sup>  
MAGNUM

*The Jewel of Dronagiri*

---

EMBRACE  
LUXURIOUS LIVING



*The Jewel of Dronagiri*

**Surrounded by love and luxury**

Find yourself amidst the sounds of the waves and scintillating sunsets.

Take a stroll to the beach and feel the breeze any time you like. Prajapati Magnum, more than just a luxurious home.





**05**

Towers with  
Swimming Pool

**G + 19**

Fully Residential  
Lifestyle Projects

**352 Flats**

with Ample  
Parking Space

**1 Acre**

of Podium  
Level Amenities

**Location**

Dronagiri,  
Navi Mumbai



# DRONAGIRI'S FINEST PROJECT COMES WITH A LIFESTYLE & AMPLE AMENITIES



Well Equipped  
Gym



Amphitheatre  
with Raised  
Seating



Elevated  
Jogging  
Track



Swimming  
Pool



Skywalk  
Over the Pool



Club house with  
Indoor Games



Kids Play Area  
with Equipments



Leisure Deck  
Seating



Party Lawn  
with Stage

# AMENITIES



JOGGING TRACK



MULTI-PUSPOSE COURT



SWIMMING POOL



KIDS PLAY AREA



## Top Reasons to buy real estate in Dronagiri :

- 5 min. drive from proposed Sewri-Nhava-seva Trans Harbour Link.
- 5 min. drive from proposed Reliance SEZ.
- 15 min. drive from proposed Navi Mumbai international Air Port and Palm Beach Road.
- Close proximity to JNPT Multi Product SEZ coming up 277 H.A/684 Acres, Investment of 4,000 Crs.
- Close Proximity to Uran, JNPT and JNPT Township.
- 25 min. drive from Panvel City.
- 25 min. drive from CBD Belapur, Navi Mumbai.
- Close Proximity to Proposed Pune Expressway Connection.
- Close proximity to Nerul-Belapur-Uran Rail network (Under Construction).

# Why Invest in Prajapati Magnum



- 60000 sqft of Podium level Amenities which is one of the biggest podium in the location
- Exclusive Premium Flats
- Skywalk over the Pool
- Elevated Jogging Track
- Leisure Deck Seating
- Well-developed social infrastructure with premier schools, colleges, banks and hospitals
- Well supported public n private transport
- 200 mtr. from upcoming Dronagiri Railway Station
- 3 km from Uran Beach
- 4 km from Mora Jetty
- 5 km from JNPT - SEZ
- 6 km from Upcoming Mumbai Trans Harbour Link
- 12 km from International airport

# LOCATION MAP





**PHASE I**

**PHASE II**

**Actual Photograph**



# SHOW FLAT



ENTRANCE LOBBY



MASTER BEDROOM



CHILDREN BEDROOM

# SHOW FLAT



LIVING ROOM

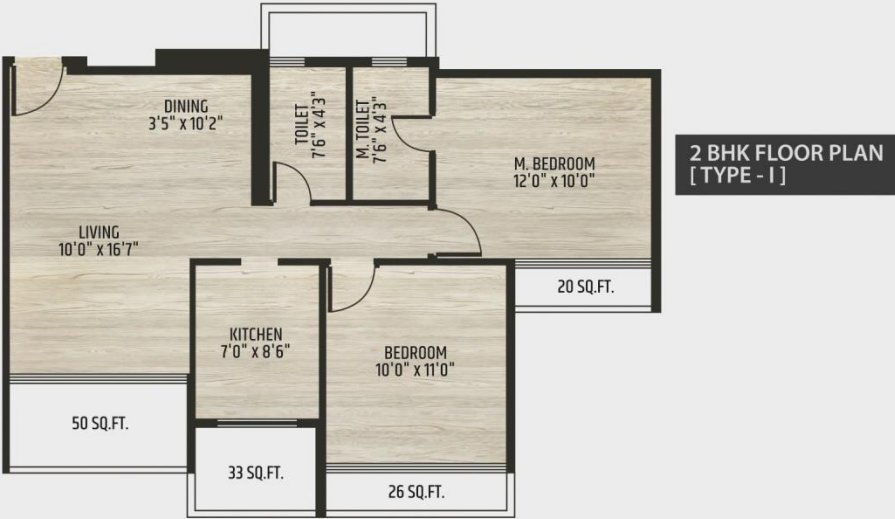


KITCHEN



WASHROOM

# FLOOR PLANS



26/08/2021

## **PRAJAPATI MAGNUM**

5 Wings of Stilt + 19 Floors | Plot No. 46-B, Sector-47, Dronagiri, Navi Mumbai.  
MahaRERA No.P52000001121 for Ph-I (Wings A, B & C) | MahaRERA No.P52000001425 for Ph-II (Wings D & E)

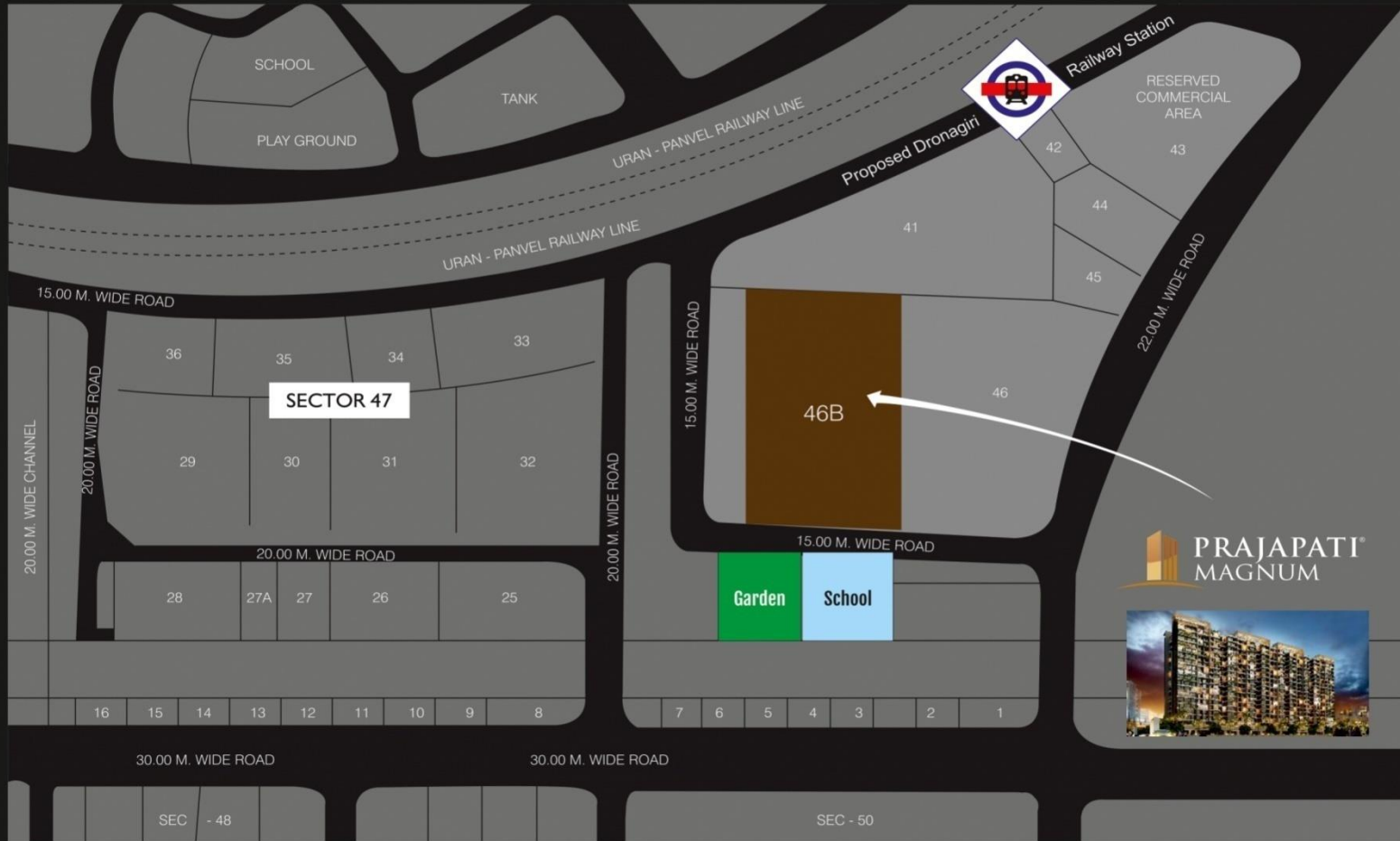
No.	Units	Price
1	2BHK	₹ 83,00,000/-
2	3BHK	₹ 1,17,00,000/-

**Note:**

1. TheabovechargesincludeGST,DevelopmentCharges,ClubHouseChargesandStiltCarParking.
2. StampDuty,RegistrationCharges,SocietyMaintenanceandConveyanceChargeswillbeextraasandwhen applicable.
3. TheabovesaidpricesaresubjecttochangewithrespecttochangesinanyGovernmentTax.

Payment Schedule		
No.	Stages	Due
1	On Booking / Before Agreement	10%
2	Upon execution of Agreement / On Completion of Piling Work	20%
3	On Completion of Plinth Work	15%
4	On Completion of 1st Slab	5%
5	On Completion of 4th Slab	5%
6	On Completion of 7th Slab	5%
7	On Completion of 9th Slab	2.50%
8	On Completion of 12th Slab	2.50%
9	On Completion of 15th Slab	2.50%
10	On Completion of 20th Slab	2.50%
11	On Completion of Brickwork & Gypsum of said apartment	5%
12	OnCompletionofExternalPlaster,ExternalPlumbing&Elevationofthebuildingorwingin which the said apartment is located	5%
13	On Completion of Flooring, Electrification, Doors & Windows of the said apartment.	5%
14	OnCompletionofStaircase,LiftWells,WaterproofingofTerraces&Lobbiesuptothefloor level of saidapartment	5%
15	OnCompletionofLifts,SanitaryFittings,Waterpumps,ElectricalFittings,Electro,Mechanical andEnvironmentRequirements,EntranceLobby,PlinthProtection,PavingofAreaappertain andallotherrequirementsasperAgreementin thesaidbldg	5%
16	On Possession	5%
	<b>Total</b>	<b>100%</b>

# LOCATION PLAN ( NOT TO SCALE )





# PRAJAPATI<sup>®</sup> MAGNUM

*The Jewel of Dronagiri*

**Plot no. 46 / B, Sector 47, Dronagiri, Navi Mumbai, Maharashtra - 400 702.**



PRAJAPATI

## M/S PRAJAPATI DEVELOPERS

### Corporate Office :

Prajapati House, Panvel - Matheran Rd, Plot no. 13/B,  
Sector 19, New Panvel, Navi Mumbai - 410 206.  
Tel.: 022-27456291.

**Contact : 8080 5040 56**

info@prajapatigroup.com | www.prajapatigroup.com

## Our Associates :



MAHARERA Registration No.:

**P52000001121 | P52000001425**

URL - www.maharera.maharashtra.gov.in

