

CODENAME



# 180° LIFE

---

A Serene Spectacle of Nature

---

A dense forest of evergreen trees, likely spruce or fir, covering a hillside. The trees are in various shades of green, from dark forest green to lighter, yellowish-green. In the upper portion of the image, several birds are seen in flight against a pale, overcast sky. The overall atmosphere is serene and natural.

Awaits You at  
**THE PARKSIDE**  
Residences



CODENAME




# 180° LIFE

Welcome to the grand lifestyle of Thane! Nestled in the lap of nature, laced with a plethora of varied amenities, 180° Life stands tall in its full glory! Become a part of Thane's most coveted address, where you will be left staring in awe at its towering presence. As you enter into this magnanimous world of wonders, you are greeted with an enormous G+35 storey edifice that comprises 1 level of commercial establishments above the ground floor & 33 residential floors above with the 34<sup>th</sup> floor being an exclusive recreational floor with a melange of amenities, fulfilling all your housing dreams forever.

With a vast expanse of nature enveloping us, we have no dearth of nature's generosity. Our beautiful abodes are replete with lavish bedrooms, modern kitchens, walk-in wardrobes, kid's play area, elegant clubhouse & so on!

The location is always a game-changer and so are we! Situated strategically around all the needed housing facilities like schools, supermarkets, restaurants, hospitals, you do not have to hike to far-away places for your basic needs. We got you covered!

Your life will change for the better, your life will turn around by 180°!

A high-rise apartment building is shown at night, illuminated from within. The building has a modern design with a grid of windows and balconies. The balconies have decorative railings and some have plants. The interior lights are warm and yellow, while the city lights in the background are a mix of colors. The sky is dark blue with some birds flying. The overall mood is peaceful and serene.

Because the chaos of  
the city do not disturb my  
tranquil surroundings.

# Exclusive Grand Entrance Lobby

---

A magnificent grand entrance lobby that awaits your arrival and lends a perfect glimpse at how majestic your living experience is going to be! Manned with security staff to handle all the visitors & guide you properly throughout the entire premises.



## Branded High-speed Elevators

---

High speed elevators brought to you by the most renowned brands in the world to give you that seamless experience while moving to and fro!



Gymnasium



Multipurpose Hall

## Club House

---

A clubhouse so spacious that you'll be left awestruck at its resplendence! Laced with 5-star privileges that boasts of a well-equipped gymnasium that lets you keep a tab on your fitness routine along with a multipurpose hall and attached terrace that makes your celebrations a much coveted affair! A residential complex that takes care of your needs, in the best ever way!

## Swimming Pool & Kids Pool

---

Life's cool by the pool! Drown out your worries, forget all the stress & simply take a dip in the ultra luxurious swimming pool for that perfect weekend vibes. Either that, or you can simply hang around by the pool deck, reading a book, soaking in the sun or just grooving to some music. The swimming pool comes with a separate pool for the kiddies to make sure their playtime is fun & safe!

Pool Deck with Sit-Out





Stock Image



Stock Image

## Landscaped Greenery

---

### Senior Citizen Sitouts

The picturesque green landscapes all around the premises provide a fresh and healthy environment to thrive in. The greenery spreads across acres of land that leaves no room for the city bustle to creep in! Embrace life's second innings starting fresh at 180° Life. Having worked all their lives, now is their time to relax and revel in peace at the separate sitout section made for the elderly. Keep fit, keep fresh!



Stock Image

Stock Image

### Flower Beds

## Gazebo

---

Modern and sturdy gazebos are placed around the premises with lovely flower beds to ensure that you can relish the marvels of nature, even when it's too sunny or pouring heavily!

# Multipurpose Court

---

A multi-purpose court with varied sports avenues like basketball, tennis, cricket etc. and an amphitheatre area with a comfortable seating ambience where you can hang out with your friends, your family & be a part of community building events like plays, musicals etc. with your beloved neighbours.

Amphitheatre



Sand Pit



Grass Cover

# Kids Play Area

---

A secure, well-fortified kids play area that ensures the safety of your children while allowing them to engage in fun playtime with other neighbouring tiny tots! With sand pits where your kids can create masterpieces & full grass cover so that they don't hurt themselves even when their playtime spirits are at an all time high!





## Walkway Path

---

A pathway designed to keep your fitness routine in check. Take a walk in the mornings to soak up some goodness of the sun or take casual strolls after dinner to just put a comfortable end to your day. This or that, the path takes care of everything!

## Security and Visitor Management System

---

A state-of-the-art security and visitor management system that helps you keep track of who has access to your home and family, keeping all the potential harm away & helping you stay safe all the time!

### Power Backup for Common Areas





## Walk-in Wardrobe

---

Walk into a world of  
style & individuality

The enormous walk-in wardrobes embedded in your spacious 2BHK homes leave you space to arrange your entire persona according to your choice! Along with being a style statement, it is a space saver too, leaving room for you to decorate your spaces more aesthetically. Arrange your clothes, your shoes, your accessories...

Separated by season, by mood, in whichever way you want to arrange it, because you've got the space! Get lost and mesmerized in your own wonderland!

# Podium Amenities



Drive Way



Multipurpose Sports Court



Walkway Path



Gazebo



Grass Cover



Sand Pit



Kids Play Area



Outdoor Sitting Semi Covered



Pool Deck with Sit-Out



Multipurpose Hall



Kids Pool



Amphitheatre Sitting



Flower Bed



Senior Citizen Sitouts












Gymnasium



Swimming Pool



## Various Remarkable Facilities

-  Co-Working Space
-  Lounge with WiFi Connectivity
-  Conference Area
-  Yoga / Meditation Zone
-  Music and Dance Studio
-  Toddlers Area
-  Indoor Game Zone
-  Screening Zone
-  Video Game Zone

## Recreational Floor

An entire floor dedicated to just fun of the highest order! Here you have various indoor games like table tennis, carrom, billiards etc with co-working spaces, toddlers area and many more amenities listed above. A lounge to relax with the enchanting views of Lake city, this floor truly lives up to its name.



Fire Fighting System



Rainwater Harvesting



Solar Panel System



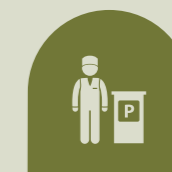
CCTV Surveillance



Multi-Layer Texture Paint



Mechanical Parking



Valet Service

Along with all our super impressive internal & external amenities, the above extra added security features just add to all the magnificence! We also take pride in saying that we follow all eco-friendly and sustainable practices that make your surroundings, indeed a safe haven for you to reside in!



## Internal Amenities

---



Vitrified Tiles  
Flooring Measuring  
4ft. x 2ft.



Granite Kitchen  
Platform  
with SS Sink



Powder Coated  
Aluminum  
Sliding Windows



Vitrified Tiles  
Dado 2ft. high above  
Kitchen Platform



Branded  
Electrical  
Switches



Premium Sanitary  
Fixtures and  
CP Fittings



Gypsum  
Finished Walls



Laminated  
Flush Doors





Intercom

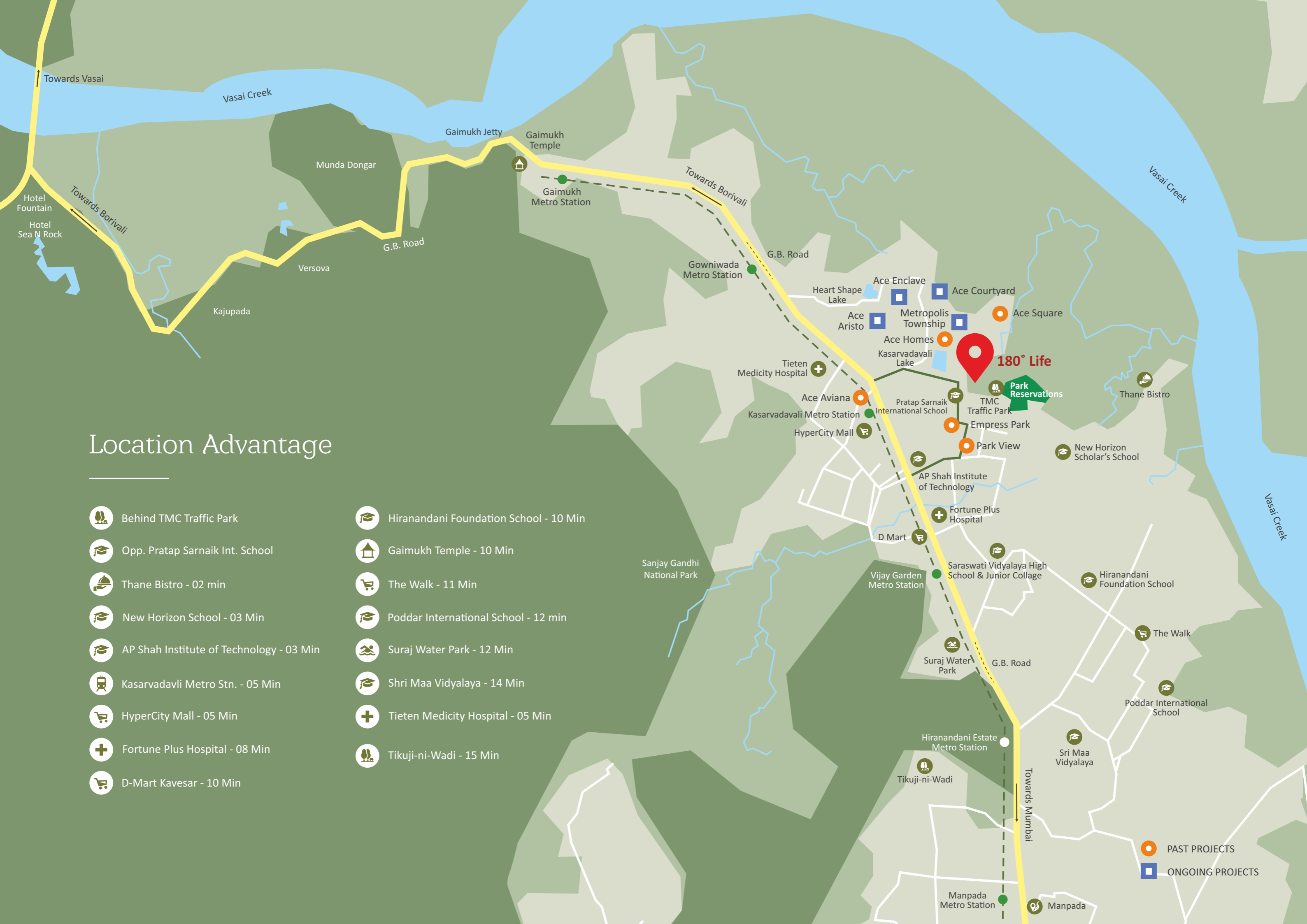
A range of internal amenities that not only make your spaces look aesthetic, but are highly functional as well. Right from the foundation of your homes, till the very last finishing touch of your home, only quality fixtures are used brought to you by globally renowned brands. Live in a home that you will forever boast about!

# Location Advantage

-  Behind TMC Traffic Park
-  Opp. Pratap Sarnaik Int. School
-  Thane Bistro - 02 min
-  New Horizon School - 03 Min
-  AP Shah Institute of Technology - 03 Min
-  Kasarvadavli Metro Stn. - 05 Min
-  HyperCity Mall - 05 Min
-  Fortune Plus Hospital - 08 Min
-  D-Mart Kavesar - 10 Min
-  Hiranandani Foundation School - 10 Min
-  Gaimukh Temple - 10 Min
-  The Walk - 11 Min
-  Poddar International School - 12 min
-  Suraj Water Park - 12 Min
-  Shri Maa Vidyalaya - 14 Min
-  Tieten Medicity Hospital - 05 Min
-  Tikuji-ni-Wadi - 15 Min

 PAST PROJECTS

 ONGOING PROJECTS



# 4 Mega - Projects which will transform Kasarvadavali



## Wadala - Kasarvadavali Metro 4 Corridor

Expected to be completed in 2024, would minimise the traffic burden on the suburban rail network.\*

## Reserve Forest Area

80 acres of land connected to Yeoor Hills at Kasarvadavali is reserved as forest land.



## Green Parks

TMC will be developing 100 acres of green spaces across Thane. 2 identified parks being developed are Northern and Southern Park at Kavesar next to Kasarvadavali.\*

## Borivali - Thane Underground SGNP Tunnel

Will reduce the travel time from 1 hour to 10 mins.\*



# Plan - 2 BHK



Unit	1 & 2
Configuration	2 BHK
Rera Area	594 Sq.Ft.

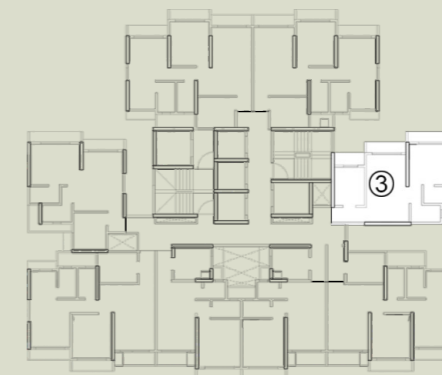




# Plan - 1 BHK



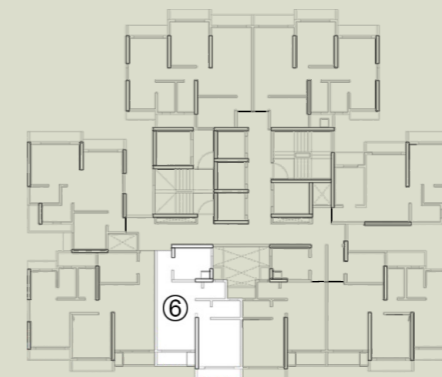
Unit	3
Configuration	1 BHK
Rera Area	437 Sq.Ft.



# Plan - 1 BHK



Unit	5 / 6
Configuration	1 BHK
Rera Area	450 / 445 Sq.Ft.
Balcony	21 Sq.Ft.
Total Area	471 / 466 Sq.Ft.



# Plan - 2 BHK



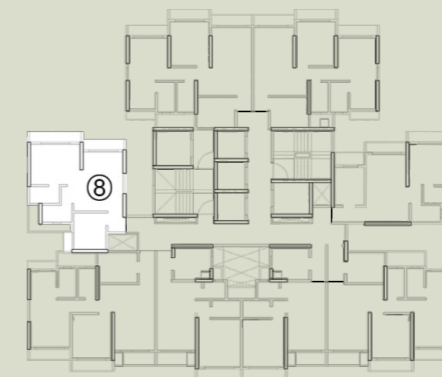
Unit	4 / 7
Configuration	2 BHK
Rera Area	640 / 631 Sq.Ft.
Balcony	22 Sq.Ft.
Total Area	662 / 653 Sq.Ft.



# Plan - 1 BHK



Unit	8
Configuration	1 BHK
Rera Area	430 Sq.Ft.



# Typical Floor Plan

Road Facing

Adjoining Car Parking Tower

Adjoining Building "B"



Park Facing



3rd to 5th, 7th to 10th, 12th to 15th, 17th to 20th,  
22nd to 25th, 27th to 30th, 32nd to 33rd

Furniture & fixtures for indicative purpose only. Sizes and dimensions are approximate, actual may vary.

# About ACE

A reputed name in the Real Estate sector, we specialise in creating both, commercial and living spaces. Since our inception, in 1999, we have successfully mapped out a footprint encompassing villas, business centres and apartments. As we stride into the future, we continue to ensure transparency and an unwavering commitment to delivering quality products to our customers for a genuine, fine living experience. Currently we have 5 redevelopment in Mulund, 2 commercial projects in Wagle Estate and 4 residential developments in Thane along with Metropolis.

Today, the ACE Group is synonymous with golden virtues such as quality, integrity, ethics, transparency and commitment of the highest standards. Our virtues have never failed to reflect in our offerings to our customers.

**ACE REALTY HAS BEEN CONSISTENTLY ENHANCING LIVES WITH ITS UNIQUE CONSTRUCTIONS. WE PRIDE OURSELVES WITH ZERO CUSTOMER COMPLAINTS IN ANY FORUM.**

Our achievements over the years.

## Over 25 Years of Expertise.

**25+** Completed Projects.

**11+** Ongoing Projects.

**18** Projects Exclusively in Kasarvadavli.

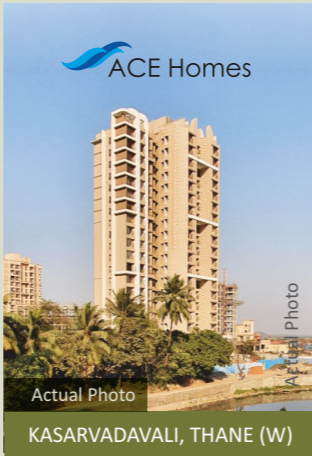
**1.4** Million sq.ft. Under Construction.

**1.2** Million sq.ft. Delivered.

**1100+** Homes Under Construction.

**1500+** Happy Families.

# Completed Projects



# Ongoing Projects



All Images Artist's Impression

Project by



A C E

Adding Value to Spaces

**Site Address:** Behind TMC Children Traffic Park, Anand Nagar - Vadavali Road, Off. G.B.Road, Thane (W) - 400615

**Tel: 022 5064 7750 | Website: [www.acerealty.co.in](http://www.acerealty.co.in)**



Maharera Reg. No. P51700052890  
[www.maharera.mahaonline.gov.in](http://www.maharera.mahaonline.gov.in)



Disclaimer: The codename "180° Life" has been officially registered on the MahaRERA website under the name "Ace Parkside" via MahaRERA registration n. P51700052890 and is available on the website <https://maharera.mahaonline.gov.in> under registered projects. The layout plan, the orientation of buildings/ towers / wings / structures, the common areas, facilities and amenities, the fixtures, fittings, soft furnishing / furniture, gadgets, technology, information, pictures, images and visuals, drawings, specifications, sketches and other details herein are merely a creative imagination and an Architect's impression and are only indicative. These should not be construed in any manner as disclosure under the provision of the Real Estate (Regulation and Development) Act, 2016 and the Rules there under by Government of Maharashtra and / or applicable law & the relevant applicable disclosures shall be made at an appropriate time. The developer reserves the right to change any or all these in the interest of the development as permissible under law. All dimensions mentioned in this brochure may vary/differ due to construction exigencies. Actual product may/differ from what is indicated herein.