

KALPATARU  
**AZURO**

 NEPEAN SEA ROAD

YOU COULD SPEND  
A LIFETIME SOAKING IN THE  
BEAUTY OF THE OCEAN.

AND IT WILL BE  
A LIFE WELL LIVED.

# THE PIONEERS OF SOUTH MUMBAI



*Breaking away from the usual low rise towers that dotted the South Mumbai cityscape, in 1969, our group founder Mr. Mofatraj P. Munot introduced a new way to look at luxury living. His vision transformed South Mumbai from a collection of stuffy mid-sized buildings to new residential properties that reflected an evolved aesthetic.*

## Kshitij - Nepean Sea Road

A 33-storey project that was developed in 1976 and was the tallest building in Mumbai, until we developed Kalpataru Heights in 1999.



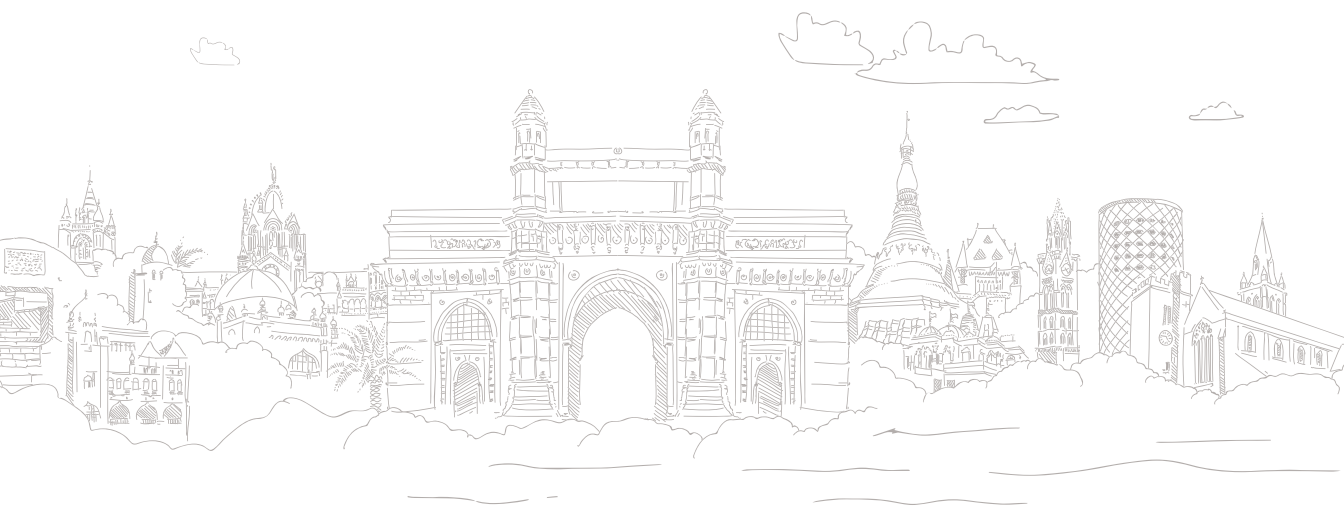
## Neelambar - Pedder Road

A 21-storey residential tower that scripted Kalpataru's transformation story and was among the tallest residential buildings of its time.



## Swapnalok - Nepean Sea Road

A design so ahead of its time, it still has not been replicated. Swapnalok was a series of stepped row homes with private terraces.





ARTIST'S IMPRESSION

## THE OCEAN OF LUXE



PRESENTING 14 BESPOKE  
OCEAN-FRONT RESIDENCES  
AT NEPEAN SEA ROAD

# HOME TO A SEA OF BILLIONAIRES





AN EXTRAVAGANT LIFE  
BY THE OCEAN



Located at one of the most prestigious  
and coveted addresses in South Mumbai.

---

Super exclusive tower with just 14 residences.

---

Ultimate privacy with only one residence per floor.

---

Unhindered, breathtaking Arabian Sea views  
from the lavish sundeck.

WITH THE SEA BREEZE'S CARESS  
AND SHADES OF BLUE TRANQUILITY  
AROUND YOU,  
YOU WILL TAKE IN LUXURY  
LIKE NEVER BEFORE.





LIVING ROOM

ARTIST'S IMPRESSION

TASTEFULLY CRAFTED HOMES  
TO MATCH THE BEAUTY OF THE SEA



MASTER BEDROOM

ARTIST'S IMPRESSION

A SEASIDE HOME  
THAT CELEBRATES LIFE  
IN ALL ITS GLORY



Infinity pool with deck



Roof top gymnasium



Multi-purpose sky deck



Double height lobby







**KALPATARU®**

**Site Address:** Kalpataru Azuro, Nepeansea Rd (L. Jagmohandas Marg),  
Malabar Hill, Mumbai, Maharashtra 400006.

**Head office:** 101, Kalpataru Synergy, opp. Grand Hyatt, Santacruz (E), Mumbai – 400 055.

---

Disclosure: All specifications, images, plans, designs, facilities, amenities, dimensions, elevations or any other information contained herein are in respect of the Kalpataru Azuro bearing MahaRERA reg. no. P51900045295. The same may be subject to changes/ revisions/ alterations in terms of approvals, orders, directions and/or regulations of the concerned/relevant authorities, and/or for compliance with laws/regulations in force from time to time. In view of the above, and in line with our customer policies, we may change/alter the above in consonance with approvals, orders, directions, applicable laws, regulations, etc. Unless otherwise stated, all the images, visuals, materials and information contained herein are purely creative/artistic concepts and may not be actual representations of the product and/or any amenities. Features, fixtures, fittings, goods, accessories, furniture and any other information reflected/displayed in the images are strictly for illustrative and representational purposes only and are not part of the standard final amenities & finishes. None of the above may be construed to form any basis of, or serve as an inducement or invitation for payment of any advance and/or deposit, to be made by a prospective customer, under relevant provisions of law or otherwise. Solely the amenities/ specifications, features mentioned in the agreement for sale (if any) shall be final. (Refer: <https://maharera.mahaonline.gov.in/>). For private circulation only. The Project is secured with Aditya Birla Finance Ltd. The No Objection Certificate/ Permission would be issued, at the relevant time, if required. Conditions apply.